

## Product datasheet for **AP08004PU-S**

### **p53 (TP53) pSer37 Rabbit Polyclonal Antibody**

#### **Product data:**

<b>Product Type:</b>	Primary Antibodies
<b>Applications:</b>	IF, WB
<b>Recommended Dilution:</b>	Western Blot: 1/500-1/1000. Immunofluorescence: 1/100-1/200.
<b>Reactivity:</b>	Human
<b>Host:</b>	Rabbit
<b>Clonality:</b>	Polyclonal
<b>Immunogen:</b>	The antiserum was produced against synthesized phosphopeptide derived from human p53 around the phosphorylation site of Serine 37 (L-P-SP-Q-A).
<b>Specificity:</b>	The antibody detects endogenous levels of p53 only when phosphorylated at Serine 37.
<b>Formulation:</b>	PBS (without Mg <sup>2+</sup> and Ca <sup>2+</sup> ), pH 7.4, 150 mM NaCl, 0.02% Sodium Azide and 50% Glycerol. State: Aff - Purified State: Liquid purified Ig fraction.
<b>Concentration:</b>	lot specific
<b>Purification:</b>	Affinity Chromatography using epitope-specific phosphopeptide. The antibody against non-phosphopeptide was removed by chromatography using non-phosphopeptide corresponding to the phosphorylation site.
<b>Conjugation:</b>	Unconjugated
<b>Storage:</b>	Store the antibody (in aliquots) at -20°C. Avoid repeated freezing and thawing.
<b>Stability:</b>	Shelf life: One year from despatch.
<b>Gene Name:</b>	tumor protein p53
<b>Database Link:</b>	<a href="#">Entrez Gene 7157 Human P04637</a>
<b>Synonyms:</b>	Cellular tumor antigen p53, Tumor suppressor p53, Phosphoprotein p53, NY-CO-13



[View online »](#)

Product images:

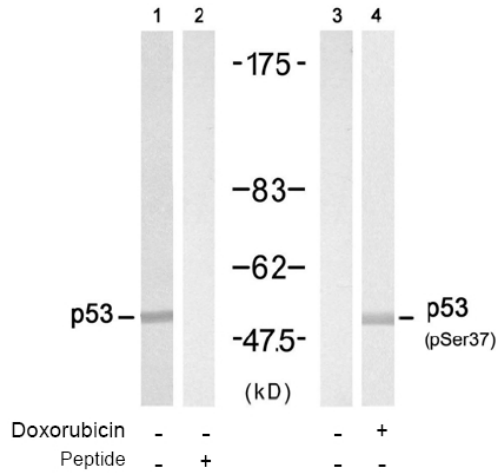


Figure 1. Western blot analysis of extract from HT-29 cells untreated or treated with Doxorubicin (1mM, 30min), using p53 antibody (Lane 1 and 2) and p53 pSer37 antibody (Lane 3 and 4).

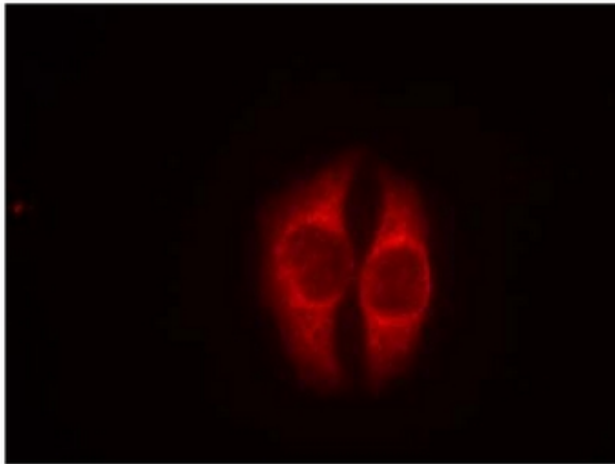


Figure 2. Immunofluorescence staining of methanol-fixed HeLa cells using p53 pSer37 antibody (Red).