

## Product datasheet for **AP08003PU-S**

### p53 (TP53) pSer33 Rabbit Polyclonal Antibody

#### Product data:

Product Type:	Primary Antibodies
Applications:	IF, WB
Recommended Dilution:	Western Blot: 1/500-1/1000. Immunofluorescence: 1/100-1/200.
Reactivity:	Human
Host:	Rabbit
Clonality:	Polyclonal
Immunogen:	The antiserum was produced against synthesized phosphopeptide derived from human p53 around the phosphorylation site of serine 33 (V-L-SP-P-L).
Specificity:	This antibody detects endogenous levels of p53 only when phosphorylated at Serine 33.
Formulation:	PBS (without Mg <sup>2+</sup> and Ca <sup>2+</sup> ), pH 7.4, 150 mM NaCl, 0.02% Sodium Azide and 50% Glycerol. State: Aff - Purified State: Liquid purified Ig fraction.
Concentration:	lot specific
Purification:	Affinity Chromatography using epitope-specific phosphopeptide. The antibody against non-phosphopeptide was removed by chromatography using non-phosphopeptide corresponding to the phosphorylation site.
Conjugation:	Unconjugated
Storage:	Store the antibody (in aliquots) at -20°C. Avoid repeated freezing and thawing.
Stability:	Shelf life: One year from despatch.
Gene Name:	tumor protein p53
Database Link:	<a href="#">Entrez Gene 7157 Human P04637</a>
Synonyms:	Cellular tumor antigen p53, Tumor suppressor p53, Phosphoprotein p53, NY-CO-13



[View online »](#)

Product images:

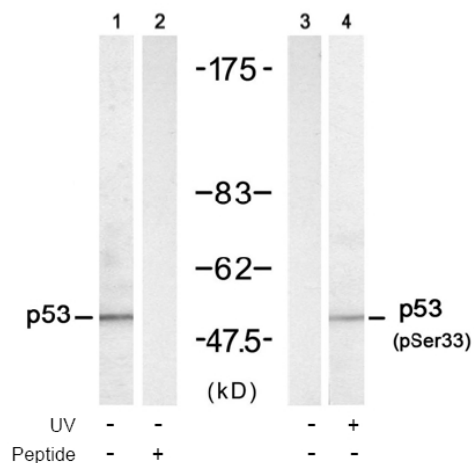


Figure 1. Western blot analysis of extract from HT-29 cells untreated or treated with UV (20 min), using p53 antibody (Lane 1 and 2) and p53 pSer33 antibody (Lane 3 and 4).

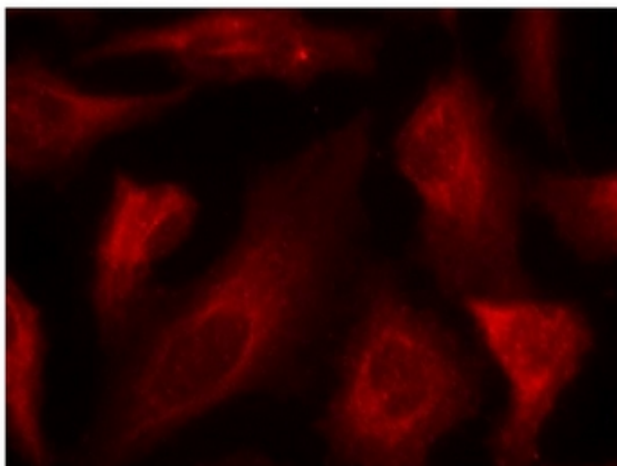


Figure 2. Immunofluorescence staining of methanol-fixed HeLa cells using p53 pSer33 antibody (Red).