

Product datasheet for **AP08001PU-S**

p53 (TP53) pSer6 Rabbit Polyclonal Antibody

Product data:

Product Type:	Primary Antibodies
Applications:	IHC, WB
Recommended Dilution:	Western blot (1/500-1/1000). Immunohistochemistry on Paraffin Sections (1/50-1/100).
Reactivity:	Human, Mouse
Host:	Rabbit
Clonality:	Polyclonal
Immunogen:	Peptide sequence around phosphorylation site of serine 6 (P-Q-S(p)-D-P) derived from Human p53
Specificity:	This antibody (p53 pSer6) detects endogenous levels of p53 only when phosphorylated at serine 6.
Formulation:	PBS (without Mg ²⁺ and Ca ²⁺), pH 7.4, 150 mM NaCl, 0.02% Sodium Azide and 50% Glycerol. State: Aff - Purified State: Liquid purified Ig fraction.
Concentration:	lot specific
Purification:	Immunoaffinity Chromatography: The antibody was affinity-purified from rabbit antiserum by affinity-chromatography using epitope-specific phosphopeptide. The antibody against non-phosphopeptide was removed by chromatography using non-phosphopeptide corresponding to the phosphorylation site.
Conjugation:	Unconjugated
Storage:	Store undiluted at 2-8°C for one month or (in aliquots) at -20°C for longer. Avoid repeated freezing and thawing.
Stability:	Shelf life: one year from despatch.
Predicted Protein Size:	53 kDa
Gene Name:	tumor protein p53
Database Link:	Entrez Gene 7157 Human P04637
Synonyms:	Cellular tumor antigen p53, Tumor suppressor p53, Phosphoprotein p53, NY-CO-13



[View online »](#)

Product images:

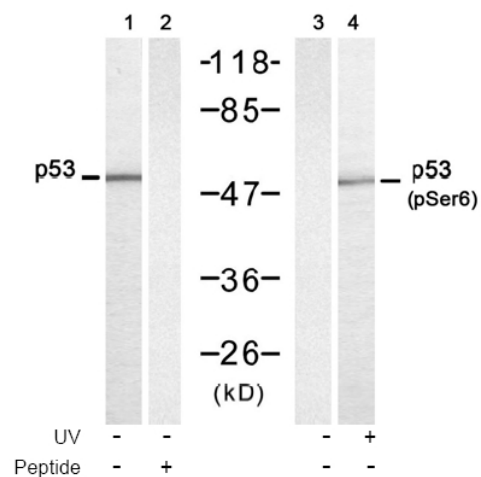


Figure 1. Western blot analysis of extract from HT-29 cells untreated or treated with UV (20 min), using p53 antibody AP08045PU (Lane 1 and 2) and p53 (pSer6) antibody AP08001PU-S (Lane 3 and 4).