

## Product datasheet for **AP07971PU-N**

### ERG (C-term) Goat Polyclonal Antibody

#### Product data:

Product Type:	Primary Antibodies
Applications:	ELISA, IHC
Recommended Dilution:	<b>ELISA:</b> 1/16000. <b>Immunohistochemistry on Paraffin Sections:</b> 10 µg/ml.
Reactivity:	Human, Monkey
Host:	Goat
Clonality:	Polyclonal
Immunogen:	Synthetic peptide from the C-terminus of human ERG (NP_891548.1; NP_004440.1; NP_001129626.1; NP_001129627.1)
Specificity:	This antibody is expected to recognise both reported isoforms (NP_891548.1; NP_004440.1).
Formulation:	Tris-buffered saline, pH 7.3, 0.5% BSA, 0.02% sodium azide State: Aff - Purified State: Liquid purified Ig fraction
Concentration:	lot specific
Purification:	Immunoaffinity Chromatography
Conjugation:	Unconjugated
Storage:	Upon receipt, store undiluted (in aliquots) at -20°C. Avoid repeated freezing and thawing.
Stability:	Shelf life: one year from despatch.
Gene Name:	ERG, ETS transcription factor
Database Link:	<a href="#">Entrez Gene 2078 Human P11308</a>
Background:	ERG is a member of the erythroblast transformation-specific (ETS) family of transcription factors. All members of this family are key regulators of embryonic development, cell proliferation, differentiation, angiogenesis, inflammation, and apoptosis. The protein encoded by this gene is mainly expressed in the nucleus. It contains an ETS DNA-binding domain and a PNT (pointed) domain which is implicated in the self-association of chimeric oncoproteins.



[View online »](#)

Synonyms: Transcriptional regulator ERG, Transforming protein ERG

**Product images:**

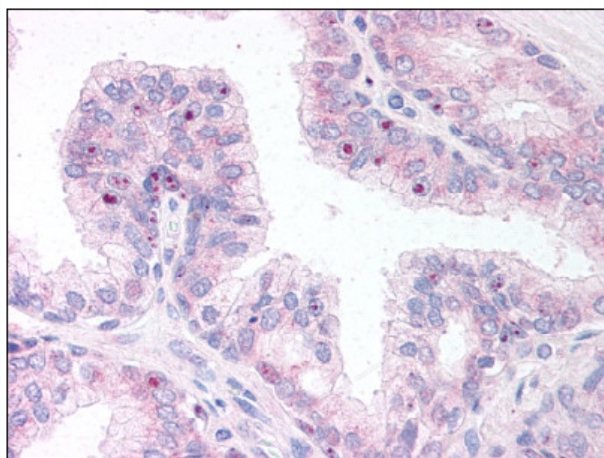


Figure 1. Staining ERG in Prostate by Immunohistochemistry using Formalin-Fixed Paraffin-Embedded (FFPE) tissue.