

Product datasheet for **AP07924PU-N**

MMP27 (445-459) Rabbit Polyclonal Antibody

Product data:

Product Type:	Primary Antibodies
Applications:	ELISA, IHC
Recommended Dilution:	ELISA: 1/1000. Immunohistochemistry on Paraffin Sections: 10 µg/ml.
Reactivity:	Human
Host:	Rabbit
Clonality:	Polyclonal
Immunogen:	Synthetic Peptide corresponding to Amino acids 445 to 459 of Human MMP27
Specificity:	This antibody recognises Matrix Metalloproteinase 27 (MMP27) at aa 445-459.
Formulation:	PBS State: Purified State: Liquid purified IgG fraction Preservative: 0.09% Sodium Azide
Concentration:	lot specific
Purification:	Protein G Chromatography
Conjugation:	Unconjugated
Storage:	Store undiluted at 2-8°C for one month or (in aliquots) at -20°C for longer. Dilute only prior to immediate use. Avoid cycles of freezing and thawing.
Stability:	Shelf life: One year from despatch.
Gene Name:	matrix metalloproteinase 27
Database Link:	Entrez Gene 64066 Human Q9H306



[View online »](#)

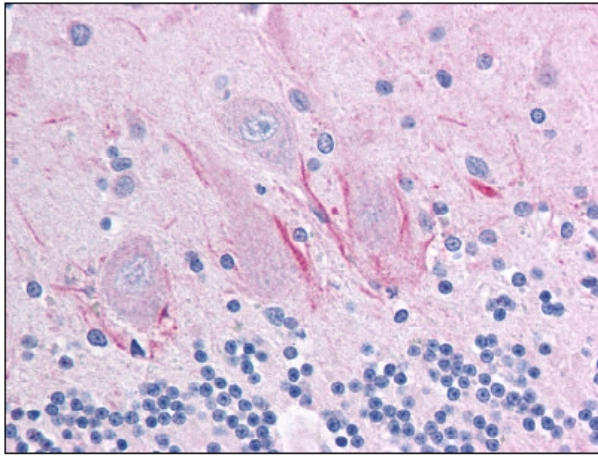
Background:

Proteins of the matrix metalloproteinase (MMP) family are involved in the breakdown of extracellular matrix in normal physiological processes, such as embryonic development, reproduction, and tissue remodeling, as well as in disease processes, such as arthritis and metastasis. Most MMP's are secreted as inactive proproteins which are activated when cleaved by extracellular proteinases.

The recently discovered 513 amino acid human MMP27 protein is located primarily in extracellular spaces in the extracellular matrix, and maps to chromosome 11q24. To date there are very few publications on MMP27, and very little information about sources or size for the protein.

Synonyms:

Matrix metalloproteinase-27, MMP27, UNQ2503/PRO5992

Product images:

Staining MMP27 in Brain, Cerebellum by Immunohistochemistry using Formalin-Fixed Paraffin-Embedded (FFPE) tissue.