

Product datasheet for **AP07917PU-N**

ROBO1 (1632-1644) Rabbit Polyclonal Antibody

Product data:

Product Type:	Primary Antibodies
Applications:	ELISA, IF, IHC, WB
Recommended Dilution:	ELISA: 1/30000 - 1/160000. Immunocytochemistry. Immunofluorescence. Immunohistochemistry on Paraffin Sections: 2.5 µg/ml. Western Blot: 1/500 - 1/3000.
Reactivity:	Human, Canine, Mouse, Rat
Host:	Rabbit
Clonality:	Polyclonal
Immunogen:	Synthetic peptide corresponding to Amino acids 1632-1644 of Human ROBO-1.
Specificity:	This antibody recognises Roundabout (ROBO1).
Formulation:	0.02 M Potassium Phosphate, 0.15 M Sodium Chloride, pH 7.2 with 0.01% (w/v) Sodium Azide as preservative. State: Aff - Purified State: Liquid purified IgG fraction.
Concentration:	lot specific
Purification:	Immunoaffinity Chromatography.
Conjugation:	Unconjugated
Storage:	Store undiluted at 2-8°C for one month or (in aliquots) at -20°C for longer. Avoid repeated freezing and thawing.
Stability:	Shelf life: one year from despatch.
Gene Name:	roundabout guidance receptor 1
Database Link:	Entrez Gene 6091 Human Q9Y6N7



[View online »](#)

Background:

ROBO-1 (also called Roundabout homolog 1 precursor and Deleted in U twenty twenty (DUTT)) functions as a receptor for SLIT1 and SLIT2. The SLIT proteins are thought to act as a molecular guidance cue in cellular migration, including axonal navigation at the ventral midline of the neural tube and projection of axons to different regions during neuronal development. In axon growth cones, the silencing of the attractive effect of NTN1 by SLIT2 may require the formation of a ROBO1-DCC complex. ROBO-1 may also be required for lung development. ROBO-1 is a type I membrane protein. ROBO-1 is a widely expressed protein with the exception of the kidney. Defects in ROBO1 may be a cause of breast and lung cancer. ROBO-1 maps within a region of overlapping homozygous deletions characterized in both small cell lung cancer cell lines (SCLC) and in a breast cancer cell line. Multiple splice variants have been identified for this protein.

Synonyms:

ROBO-1, Roundabout homolog 1, DUTT1

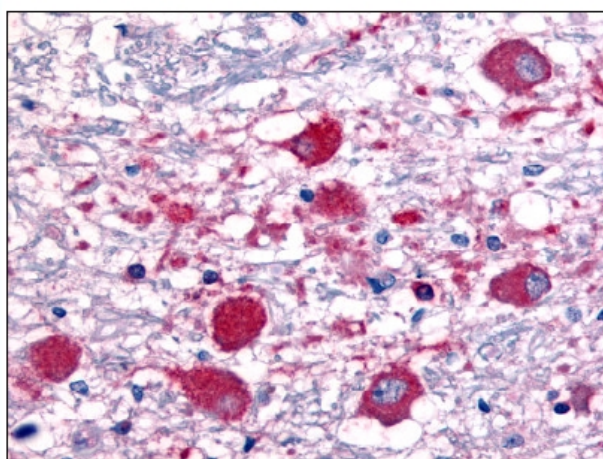
Product images:

Figure 1. Staining ROBO1 in Brain by Immunohistochemistry using Formalin-Fixed Paraffin-Embedded (FFPE) tissue.