

Product datasheet for **AP07903PU-N**

Claudin 7 (CLDN7) (107-120) Rabbit Polyclonal Antibody

Product data:

Product Type:	Primary Antibodies
Applications:	ELISA, IHC
Recommended Dilution:	ELISA: 1/1000. Immunohistochemistry on Paraffin Sections: 10 µg/ml.
Reactivity:	Human
Host:	Rabbit
Clonality:	Polyclonal
Immunogen:	Synthetic peptide from human CLDN7 / Claudin-7, aa 107-120
Specificity:	This antibody recognises Claudin 7 (CLDN7) at aa 107-120.
Formulation:	Phosphate Buffered Saline PBS containing 0.09% Sodium Azide as preservative State: Purified State: Liquid purified IgG fraction
Concentration:	lot specific
Purification:	Protein G Chromatography
Conjugation:	Unconjugated
Storage:	Store the antibody undiluted at 2-8°C for one month or (in aliquots) at -20°C for longer. Dilute only prior to immediate use. Avoid cycles of freezing and thawing.
Stability:	Shelf life: One year from despatch.
Gene Name:	claudin 7
Database Link:	Entrez Gene 1366 Human O95471
Background:	Claudins, such as CLDN7, are involved in the formation of tight junctions between epithelial cells. Tight junctions restrict lateral diffusion of lipids and membrane proteins, and thereby physically define the border between the apical and basolateral compartments of epithelial cells.
Synonyms:	CLDN-7, CEPTRL2, CPETRL2



[View online »](#)

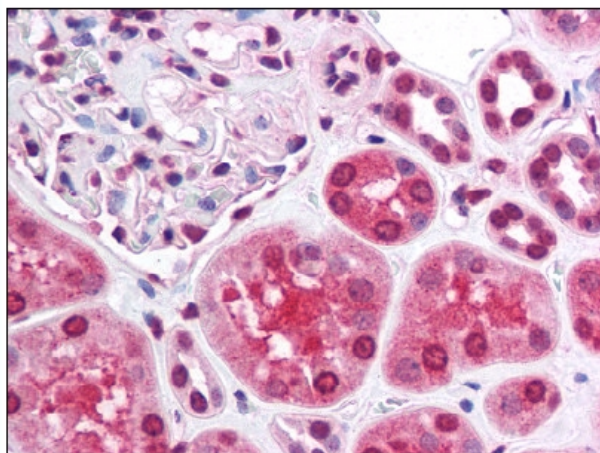
Product images:

Figure 1. Staining CLDN7 in Kidney by Immunohistochemistry using Formalin-Fixed Paraffin-Embedded (FFPE) tissue.