

Product datasheet for **AP07885PU-N**

Sprouty 4 (SPRY4) (306-322) Rabbit Polyclonal Antibody

Product data:

Product Type:	Primary Antibodies
Applications:	ELISA, IHC, WB
Recommended Dilution:	ELISA: 1/3000 - 1/12000. Immunohistochemistry on Paraffin Sections: 2.5 µg/ml. Western Blot: 1/100 - 1/1000.
Reactivity:	Human, Bovine, Canine, Mouse, Rat
Host:	Rabbit
Clonality:	Polyclonal
Immunogen:	Synthetic Peptide corresponding to Amino acids 306-322 of Human Sprouty-4 protein
Specificity:	This antibody recognises Sprouty Homolog 4 (SPRY4) at aa 306-322.
Formulation:	0.02 M Potassium Phosphate, 0.15 M Sodium Chloride, pH 7.2 with 0.01% (w/v) Sodium Azide as preservative State: Aff - Purified State: Liquid purified IgG fraction
Concentration:	lot specific
Purification:	Immunoaffinity Chromatography
Conjugation:	Unconjugated
Storage:	Store the antibody (in aliquots) at -20°C. Dilute only prior to immediate use. Avoid cycles of freezing and thawing.
Stability:	Shelf life: One year from despatch.
Gene Name:	sprouty RTK signaling antagonist 4
Database Link:	Entrez Gene 81848 Human Q9C004



[View online »](#)

Background:

Sprouty-4 (also known as SPRY4) is an inhibitor of the insulin receptor and EGFR-transduced mitogen-activated protein kinase (MAPK) signaling pathway downstream of FGF and EGF receptor tyrosine kinase activation. It is positioned upstream of RAS activation and impairs the formation of active GTP-RAS. SPRY4 is widely expressed, with different isoforms. The protein consists of 322 amino acids, with a cysteine-rich region, Src homology 3 binding regions, proline-rich regions, and a PEST sequence. It is expressed predominantly in the cytoplasm. Northern results show bands across most tissues, with strongest expression in heart, brain, placenta, lung, and intestine.

Synonyms:

Spry-4, Sprouty 4

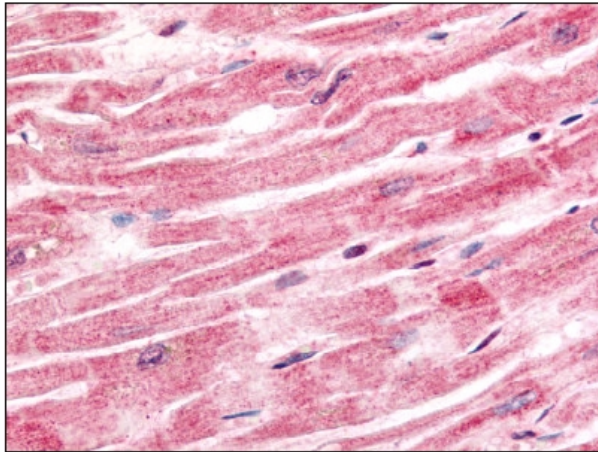
Product images:

Figure 1. Staining SPRY4 in Heart by Immunohistochemistry using Formalin-Fixed Paraffin-Embedded (FFPE) tissue.