

Product datasheet for **AP07880PU-N**

SUPT16H (321-640) Rabbit Polyclonal Antibody

Product data:

Product Type:	Primary Antibodies
Applications:	IHC, IP, WB
Recommended Dilution:	Immunohistochemistry on Paraffin Sections: 20 µg/ml. Immunoprecipitation. Western Blot.
Reactivity:	Human, Mouse
Host:	Rabbit
Clonality:	Polyclonal
Immunogen:	Recombinant protein comprised of GST and amino acids 321-640 of human SUPT16H
Specificity:	This antibody recognises Suppressor Of Ty 16 Homolog (SUPT16H).
Formulation:	PBS State: Purified State: Liquid purified IgG fraction Preservative: 0.08% Sodium Azide
Concentration:	lot specific
Purification:	Ammonium sulfate precipitation
Conjugation:	Unconjugated
Storage:	Upon receipt, store undiluted (in aliquots) at -20°C. Avoid repeated freezing and thawing.
Stability:	Shelf life: one year from despatch.
Gene Name:	SPT16 homolog, facilitates chromatin remodeling subunit
Database Link:	Entrez Gene 11198 Human Q9Y5B9
Background:	SUPT16H plays a role in general transcription, it has positive and negative effects on gene expression. Required for the appropriate synthesis during heat shock. Required for continued expression of cyclin genes that determine the passage through start during cell cycle control. it may act as an acidic activator. Its function is probably related to other spt genes.
Synonyms:	FACT complex subunit SPT16, FACTp140



[View online »](#)

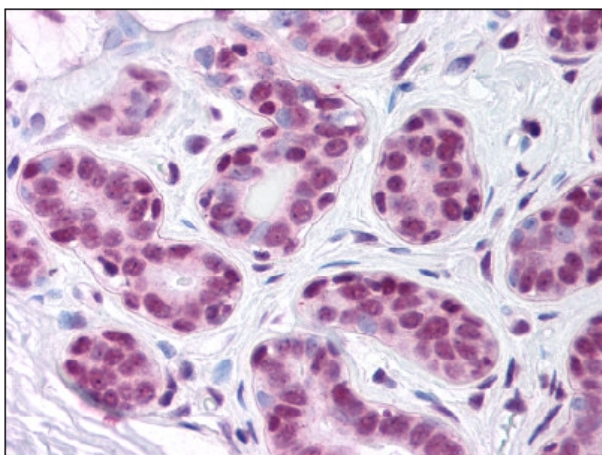
Product images:

Figure 1. Staining SUPT16H in Breast by Immunohistochemistry using Formalin-Fixed Paraffin-Embedded (FFPE) tissue.