

Product datasheet for **AP07877PU-N**

GLI2 Rabbit Polyclonal Antibody

Product data:

Product Type:	Primary Antibodies
Applications:	ELISA, IHC, WB
Recommended Dilution:	ELISA: 1/15000 - 1/60000. Immunohistochemistry on Paraffin Sections: 5 µg/ml. Western Blot: 1/500 - 1/2000.
Reactivity:	Mouse, Rat
Host:	Rabbit
Clonality:	Polyclonal
Immunogen:	Synthetic Peptide corresponding to Amino acids from an internal region of Mouse Gli-2.
Specificity:	This antibody recognises GLI-Kruppel Family Member GLI2 (GLI2).
Formulation:	0.02 M Potassium Phosphate, 0.15 M Sodium Chloride, pH 7.2 with 0.01% Sodium Azide as preservative. State: Aff - Purified State: Liquid purified IgG fraction.
Concentration:	lot specific
Purification:	Immunoaffinity Chromatography.
Conjugation:	Unconjugated
Storage:	Store the antibody undiluted at 2-8°C for one month or (in aliquots) at -20°C for longer. Dilute only prior to immediate use. Avoid cycles of freezing and thawing.
Stability:	Shelf life: One year from despatch.
Gene Name:	GLI family zinc finger 2
Database Link:	P10070



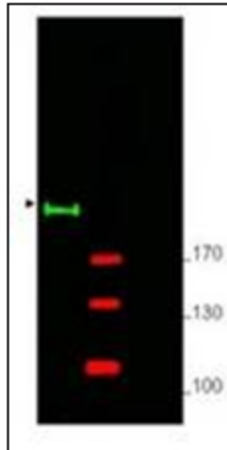
[View online »](#)

Background:

Gli-2 (also known as Zinc Finger Protein Gli-2, GLI-Kruppel family member GLI-2 or Tax helper protein) belongs to the C2H2-type zinc finger protein subclass of the Gli family. Members of this subclass are characterized as transcription factors that bind DNA through zinc finger motifs. These motifs contain conserved H-C links. Gli family zinc finger proteins are mediators of Sonic hedgehog (Shh) signaling, and they are implicated as potent oncogenes in the embryonal carcinoma cell. The protein encoded by this gene localizes to the cytoplasm and activates patched Drosophila homolog (PTCH) gene expression. Gli-2 is also thought to play a role during embryogenesis. The encoded protein is associated with several phenotypes: Greig cephalopolysyndactyly syndrome, Pallister-Hall syndrome, pre-axial polydactyly type IV, post-axial polydactyly types A1 and B. Expression has been reported for this mRNA in human testis, myometrium, kidney, lung, glioblastomas, and embryonal cell carcinomas. Multiple splice variants have been reported for this protein.

Synonyms:

GLI-2, THP

Product images:

Western analysis of mouse brain whole lysate.

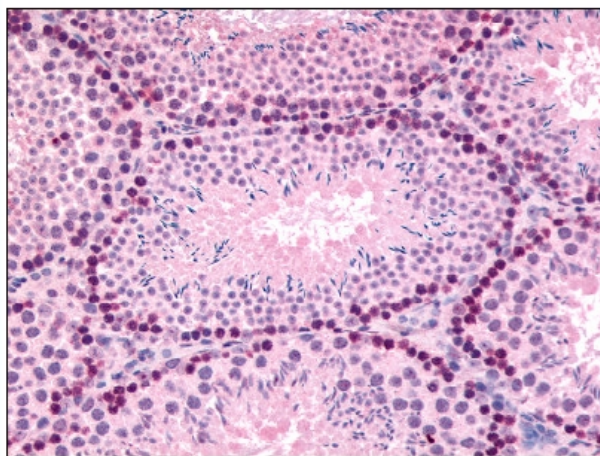


Figure 1. Staining GLI2 in Mouse Testis by Immunohistochemistry using Formalin-Fixed Paraffin-Embedded (FFPE) tissue.

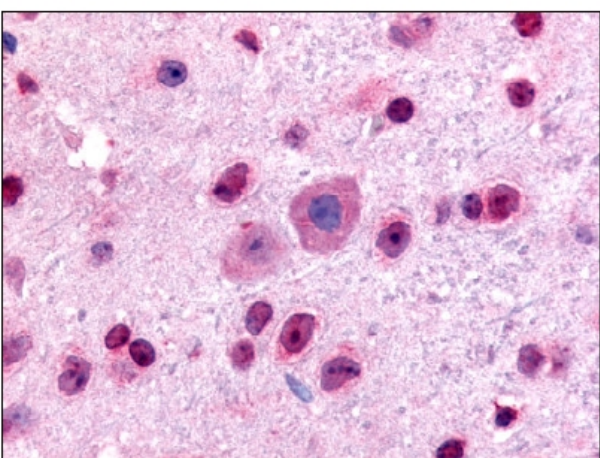


Figure 2. Staining GLI2 in Mouse Brain by Immunohistochemistry using Formalin-Fixed Paraffin-Embedded (FFPE) tissue.