

## Product datasheet for **AP07843PU-N**

### Collagen III (COL3A1) Rabbit Polyclonal Antibody

#### Product data:

Product Type:	Primary Antibodies
Applications:	ELISA, IHC, IP, WB
Recommended Dilution:	<b>ELISA:</b> 1/5000 - 1/10000. <b>Immunohistochemistry on Paraffin Sections:</b> 2.5 µg/ml. <b>Immunoprecipitation.</b> <b>Western Blot.</b>
Reactivity:	Bovine, Human
Host:	Rabbit
Clonality:	Polyclonal
Immunogen:	Collagen Type III from Human and Bovine placenta
Specificity:	This antibody detects Collagen Type III from Placenta.
Formulation:	0.02M Potassium Phosphate, pH 7.2, 0.15M NaCl State: Aff - Purified State: Liquid purified IgG fraction Preservative: 0.01% (w/v) Sodium Azide
Concentration:	lot specific
Purification:	Immunoaffinity Chromatography
Conjugation:	Unconjugated
Storage:	Store undiluted at 2-8°C for one month or (in aliquots) at -20°C for longer. Avoid cycles of freezing and thawing.
Stability:	Shelf life: One year from despatch.
Gene Name:	collagen type III alpha 1 chain
Database Link:	<a href="#">Entrez Gene 1281 Human P02461</a>



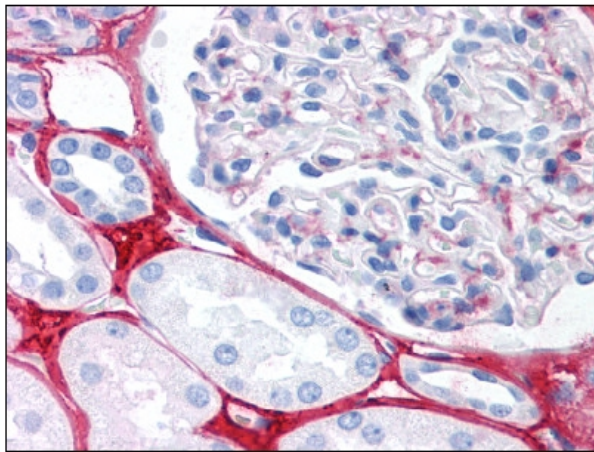
[View online »](#)

**Background:**

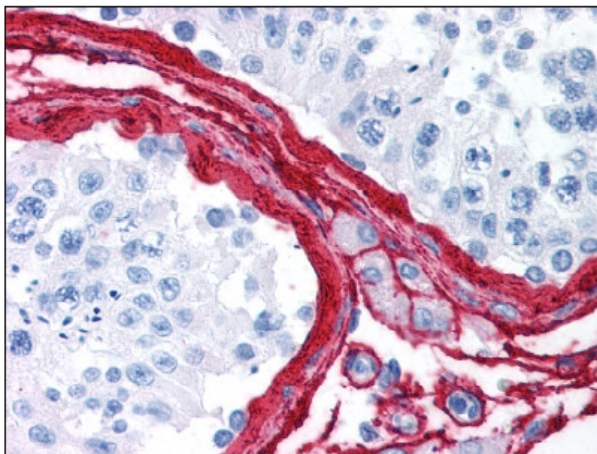
Collagens are highly conserved throughout evolution and are characterized by an uninterrupted "Glycine-X-Y" triplet repeat that is a necessary part of the triple helical structure. For these reasons it is often extremely difficult to generate antibodies with specificities to collagens. The development of type specific antibodies is dependent on NON-DENATURED three-dimensional epitopes. Collagens are extensively purified for immunization from human and bovine placenta and cartilage by limited pepsin digestion and selective salt precipitation. This preparation results in a native conformation of the protein. Antibodies are isolated from rabbit antiserum and are extensively cross-adsorbed by immunoaffinity purification to produce 'type' specific antibodies. Greatly diminished reactivity and selectivity of these antibodies will result if denaturing and reducing conditions of SDS-PAGE and immunoblotting are used.

**Synonyms:**

COL3A1

**Product images:**

Staining COL3A1 in Kidney by Immunohistochemistry using Formalin-Fixed Paraffin-Embedded (FFPE) tissue.



Staining COL3A1 in Testis by Immunohistochemistry using Formalin-Fixed Paraffin-Embedded (FFPE) tissue.