

Product datasheet for **AP07839PU-N**

TLR9 Rabbit Polyclonal Antibody

Product data:

Product Type:	Primary Antibodies
Applications:	IHC, WB
Recommended Dilution:	Immunohistochemistry on Paraffin Sections: 10 µg/ml. Western Blot: 0.5 - 1 µg/ml.
Reactivity:	Human, Mouse, Rat
Host:	Rabbit
Clonality:	Polyclonal
Immunogen:	15 amino acids from an internal region of human TLR9.
Specificity:	This antibody detects Toll-like Receptor 9 (TLR9).
Formulation:	PBS containing 0.02% Sodium Azide as preservative. State: Purified State: Liquid purified Ig fraction.
Concentration:	lot specific
Purification:	Immunoaffinity Chromatography.
Conjugation:	Unconjugated
Storage:	Store the antibody undiluted at 2-8°C DO NOT FREEZE!
Stability:	Shelf life: One year from despatch.
Gene Name:	toll like receptor 9
Database Link:	Entrez Gene 54106 Human Q9NR96



[View online »](#)

Background:

TLR9 is a member of the Toll like receptor (TLR) family which plays a fundamental role in pathogen recognition and activation of innate immunity. TLRs are highly conserved from *Drosophila* to humans and share structural and functional similarities. They recognize pathogen associated molecular patterns (PAMPs) that are expressed on infectious agents, and mediate the production of cytokines necessary for the development of effective immunity. The various TLRs exhibit different patterns of expression. The gene encoding this protein is predominantly expressed in lung, placenta, and spleen, and lies in close proximity to another family member, TLR8, on chromosome X.

Synonyms:

Toll-like receptor 9, UNQ5798/PRO19605

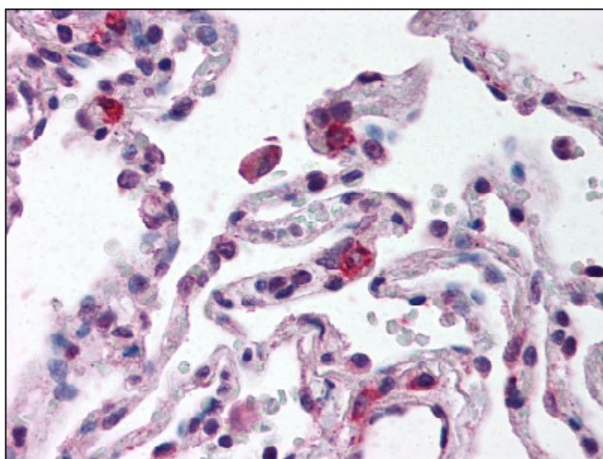
Product images:

Figure 1. Staining TLR9 in Lung by Immunohistochemistry using Formalin-Fixed Paraffin-Embedded (FFPE) tissue.