

## Product datasheet for **AP07832PU-N**

### Artemis (DCLRE1C) Goat Polyclonal Antibody

#### Product data:

Product Type:	Primary Antibodies
Applications:	ELISA, IHC, WB
Recommended Dilution:	<b>ELISA:</b> 1/10000 - 1/20000. <b>Immunohistochemistry on Paraffin Sections:</b> 1.25 - 2.5 µg/ml. <b>Western Blot:</b> 1/500 - 1/2000.
Reactivity:	Human
Host:	Goat
Clonality:	Polyclonal
Immunogen:	Synthetic Peptide corresponding to aa 482-495 of Human ARTEMIS (DCLRE1C DNA cross-link repair 1C).
Formulation:	0.02 M Potassium Phosphate, 0.15 M Sodium Chloride, pH 7.2 with 0.01% (w/v) Sodium Azide as preservative. State: Aff - Purified State: Liquid purified Ig fraction.
Concentration:	lot specific
Purification:	Immunoaffinity Chromatography.
Conjugation:	Unconjugated
Storage:	Store the antibody (in aliquots) at -20°C. Dilute only prior to immediate use. Avoid cycles of freezing and thawing.
Stability:	Shelf life: One year from despatch.
Gene Name:	DNA cross-link repair 1C
Database Link:	<a href="#">Entrez Gene 64421 Human Q96SD1</a>



[View online »](#)

**Background:**

Human Artemis is a newly identified 78.4 kDa, novel DNA double-strand break repair/v(d)j recombination protein. This gene is located at human chromosome 10. Artemis has a role in T and B lymphocyte immunodeficiency and in predisposition to lymphoma through the NHEJ pathway of DNA repair. DNA-PKcs regulates Artemis by both phosphorylation and complex formation to permit enzymatic activities that are critical for the hairpin-opening step of V(D)J recombination and for the 5' and 3' overhang processing in non-homologous DNA end joining.

**Synonyms:**

DCLRE1C, ASCID, SCIDA, SNM1C, SNM1-like protein, A-SCID protein

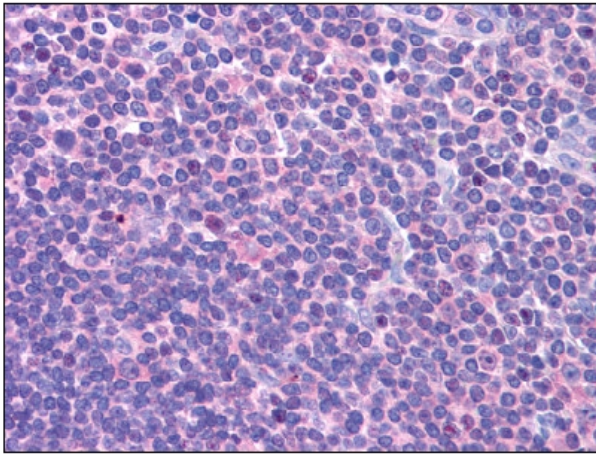
**Product images:**

Figure 1. Staining Artemis in Lymph node by Immunohistochemistry using Formalin-Fixed Paraffin-Embedded (FFPE) tissue.