

Product datasheet for **AP07829PU-N**

Nestin (NES) (1484-1500) Rabbit Polyclonal Antibody

Product data:

Product Type:	Primary Antibodies
Applications:	ELISA, IHC, WB
Recommended Dilution:	ELISA: 1/20000 - 1/80000. Immunofluorescence. Immunohistochemistry on Paraffin Sections: 5 µg/ml. Western Blot: 1/500 - 1/3000.
Reactivity:	Human, Mouse
Host:	Rabbit
Clonality:	Polyclonal
Immunogen:	Recombinant protein corresponding to amino acids 1484-1500 of Human Nestin
Specificity:	This antibody recognizes Nestin.
Formulation:	0.02M Potassium Phosphate, 0.15M Sodium Chloride, pH 7.2 State: Aff - Purified State: Liquid purified Ig fraction Preservative: 0.01% (w/v) Sodium Azide
Concentration:	lot specific
Purification:	Immunoaffinity Chromatography
Conjugation:	Unconjugated
Storage:	Store undiluted at 2-8°C for one month or (in aliquots) at -20°C for longer. Avoid repeated freezing and thawing.
Stability:	Shelf life: one year from despatch
Gene Name:	nestin
Database Link:	Entrez Gene 10763 Human P48681



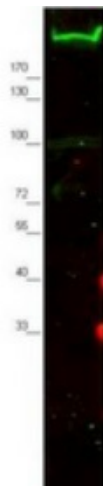
[View online »](#)

Background:

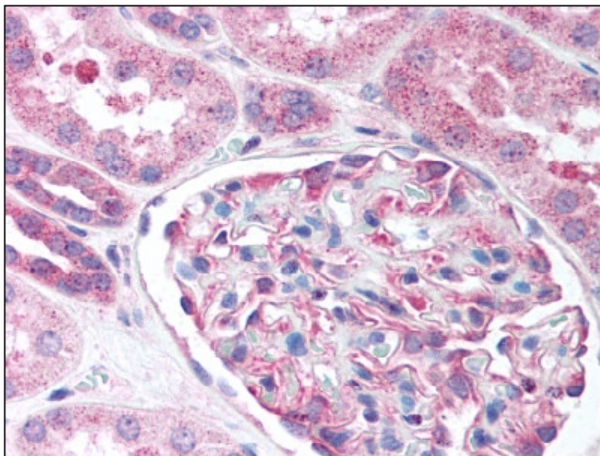
Nestin, is a large intermediate filament protein (class Type VI) that was first identified with a monoclonal antibody by Hockfield and McKay (1985). Nestin is expressed predominantly in stem cells of the central nervous system in the neural tube. Nestin is expressed during development and in myotendinous and neuromuscular junctions. Nestin expression is restricted, typically disappearing by E18. Nestin is thought to be a reasonable neuronal marker; however, recent studies have found nestin expression in other cell types such as endothelial cells. Nestin expression is seen in almost all GBMs (Glioblastoma multiformes) and many melanomas (both primary and metastatic) but not in any metastatic carcinomas. Upon terminal neural differentiation, nestin is downregulated and replaced by neurofilaments.

Synonyms:

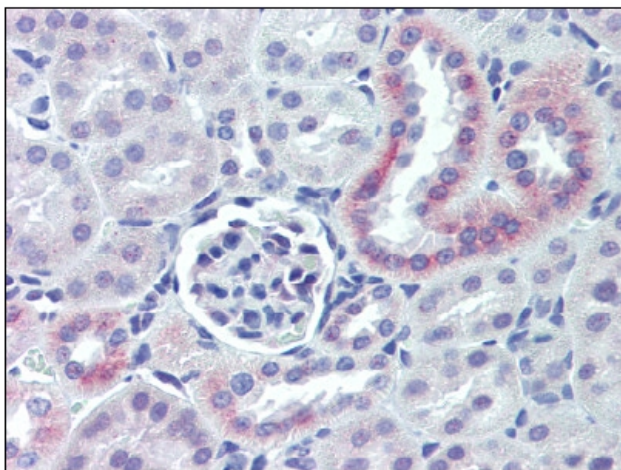
NES, Nbla00170

Product images:


Anti-Nestin Antibody - Western Blot. Western blot using Affinity Purified anti-Nestin antibody shows detection of a band ~220 kD corresponding to mouse Nestin (arrowhead). Approximately 30 g of MEF whole cell lysate was separated by SDS-PAGE using a 4-20% gradient gel. After transfer onto nitrocellulose, the membrane was blocked and then probed with the primary antibody diluted to 1:2000 overnight at 4°C. The membrane was then washed and reacted with a 1:10000 dilution of IRDye800 conjugated Gt-a-Rabbit IgG [H&L] MX (for 45 min at room temperature. IRDye800 fluorescence image was captured using the Ddyssey Infrared Imaging System developed by LI-COR. IRDye is a trademark of LI-COR, Inc. Other detection systems will yield similar results.



Nestin antibody staining of Formalin-Fixed Paraffin-Embedded Human Kidney at 5 ug/ml



Nestin antibody staining of Formalin-Fixed Paraffin-Embedded Mouse Kidney.