

Product datasheet for **AP07828PU-N**

TGF beta 1 (TGFB1) (286-293) Rabbit Polyclonal Antibody

Product data:

Product Type:	Primary Antibodies
Applications:	ELISA, IF, IHC, WB
Recommended Dilution:	ELISA: 1/2000 - 1/10000. Immunofluorescence. Immunohistochemistry on Paraffin Sections: 5 µg/ml. Western Blot: 1/200 - 1/1000.
Reactivity:	Human
Host:	Rabbit
Clonality:	Polyclonal
Immunogen:	KLH conjugated Synthetic Peptide corresponding to aa 286-293 (of 390) of full-length (including signal peptide) precursor TGFb protein.
Specificity:	This antibody is specific to TGF-beta-1 (TGFB1)
Formulation:	0.02M Potassium Phosphate, 0.15 M Sodium Chloride, pH 7.2 containing 0.01% Sodium Azide as preservative State: Aff - Purified State: Liquid purified Ig fraction
Concentration:	lot specific
Purification:	Immunoaffinity Chromatography
Conjugation:	Unconjugated
Storage:	Store undiluted at 2-8°C for one month or (in aliquots) at -20°C for longer. Avoid repeated freezing and thawing.
Stability:	Shelf life: one year from despatch.
Gene Name:	transforming growth factor beta 1
Database Link:	Entrez Gene 7040 Human P01137



[View online »](#)

Background:

TGF-beta-1 is a multifunctional cytokine that belongs to a superfamily of structurally related regulatory proteins, which includes three mammalian TGF-beta isoforms (TGF-beta-1, -beta-2, and -beta-3), activin/inhibins and bone morphogenetic proteins. The most abundant isoform, TGF-beta-1, is a 25kDa homodimer composed of two 12.5kDa subunits joined by disulfide bonds. TGF-beta-1 is a highly conserved molecule - the amino acid sequence between human and mouse differ only by one residue. Although originally defined by its ability to cause anchorage independent cell growth and changes in cell morphology of rat fibroblasts, subsequent research has revealed that TGF-beta is actually a major growth inhibitor for most cell types. It is produced by a wide variety of cell and tissue types during all stages of cell differentiation. TGF-beta-1 sources include platelets, bone and soft tissues such as placenta and kidneys.

Synonyms:

TGFB, Transforming growth factor beta-1, TGF-beta-1

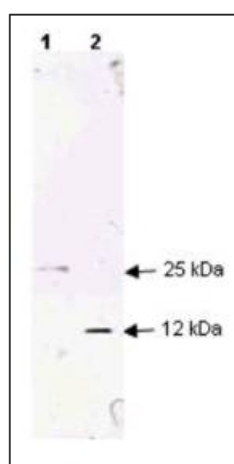
Product images:


Figure 2. Each lane contains 250 ng of protein under non-reducing (Lane 1) and reducing conditions (Lane 2). The blot was incubated with a 1/200 dilution of the antibody at RT for 1 h followed by detection using IRDye®800 labeled Goat-anti Rabbit IgG (H&L). IRDye®800 fluorescence image was captured using the Odyssey® Infrared Imaging System developed by LI-COR.

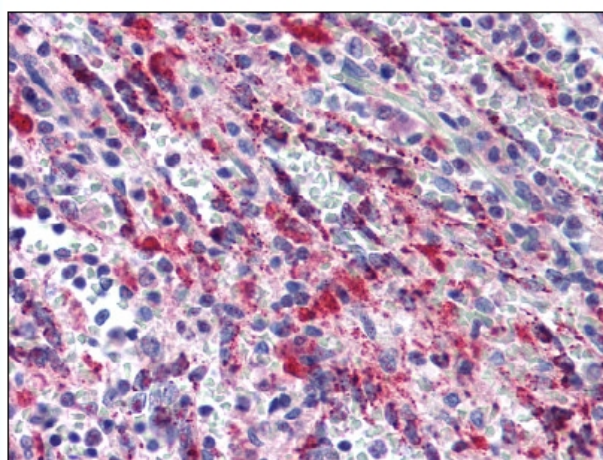


Figure 1. TGFB1 antibody staining of Formalin-Fixed, Paraffin-Embedded Human Spleen at 5 ug/ml, followed by biotinylated Goat anti-Rabbit IgG secondary antibody, alkaline phosphatase-streptavidin and chromogen.