

Product datasheet for **AP07811PU-N**

GNB5 Rabbit Polyclonal Antibody

Product data:

Product Type:	Primary Antibodies
Applications:	IHC, WB
Recommended Dilution:	Immunohistochemistry on Paraffin Sections: 20 µg/ml. Western Blot.
Reactivity:	Human, Mouse
Host:	Rabbit
Clonality:	Polyclonal
Immunogen:	Synthetic Peptide from the D1 blade of GNB5 protein.
Specificity:	This antibody recognises Guanine Nucleotide-binding Protein Beta Subunit 5 (GNB5).
Formulation:	Phosphate Buffered Saline PBS containing 0.02% Sodium Azide as preservative. State: Liquid purified IgG fraction.
Concentration:	lot specific
Purification:	Ammonium Sulfate Precipitation.
Conjugation:	Unconjugated
Storage:	Store the antibody (in aliquots) at -20°C. Avoid repeated freezing and thawing.
Stability:	Shelf life: one year from despatch.
Gene Name:	G protein subunit beta 5
Database Link:	Entrez Gene 10681 Human O14775
Background:	GNB5 is a guanine nucleotide-binding protein (G-protein). Heterotrimeric G proteins are composed of an alpha, a beta, and a gamma subunit and are involved as a modulator or transducer in various transmembrane signaling systems, integrating signals between receptors and effector proteins. Beta subunits are required for GTPase activity, for replacement of GDP by GTP, regulation of alpha subunits and for G protein-effector interactions.
Synonyms:	Gbeta5



[View online »](#)

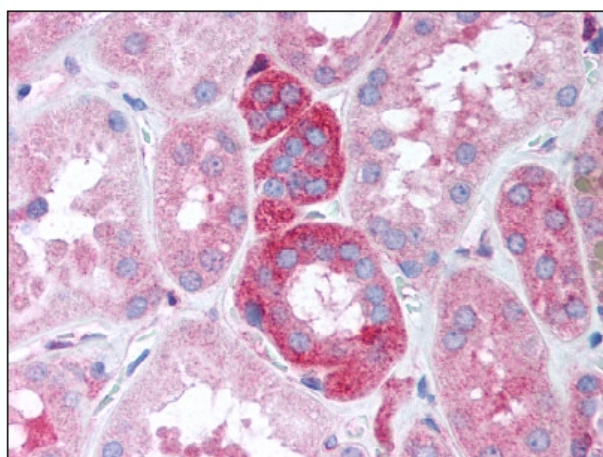
Product images:

Figure 1. Staining GNB5 in Kidney tissue by Immunohistochemistry using Formalin-Fixed Paraffin-Embedded (FFPE) tissue.