

Product datasheet for **AP07791PU-N**

TMP21 (TMED10) (C-term) Rabbit Polyclonal Antibody

Product data:

Product Type:	Primary Antibodies
Applications:	IHC, WB
Recommended Dilution:	Immunohistochemistry on Paraffin Sections: 3 µg/ml. Western Blot.
Reactivity:	Human, Mouse, Rat
Host:	Rabbit
Clonality:	Polyclonal
Immunogen:	Synthetic Peptide corresponding to 19 amino acid peptide from near the carboxy terminus of human TMP21.
Specificity:	This antibody reacts to a 19 amino acid peptide from near the carboxy terminus of human TMP21.
Formulation:	PBS containing 0.02% Sodium Azide as preservative. State: Purified State: Liquid purified IgG fraction
Concentration:	lot specific
Conjugation:	Unconjugated
Storage:	Store the antibody undiluted at 2-8°C for one month or (in aliquots) at -20°C for longer. Avoid repeated freezing and thawing.
Stability:	Shelf life: one year from despatch.
Gene Name:	transmembrane p24 trafficking protein 10
Database Link:	Entrez Gene 10972 Human P49755
Background:	TMP21 is a integral membrane protein that is localized in microsomal membranes, zymogen granule membrane and the plasma membrane. It is ubiquitously expressed and is involved in vesicular targeting and protein transport. Recent studies have shown that TMP21 is a component of presenillin complexes and differentially regulates gamma-secretase cleavage of the amyloid precursor protein, without affecting epsilon-secretase activity.
Synonyms:	S311125



[View online »](#)

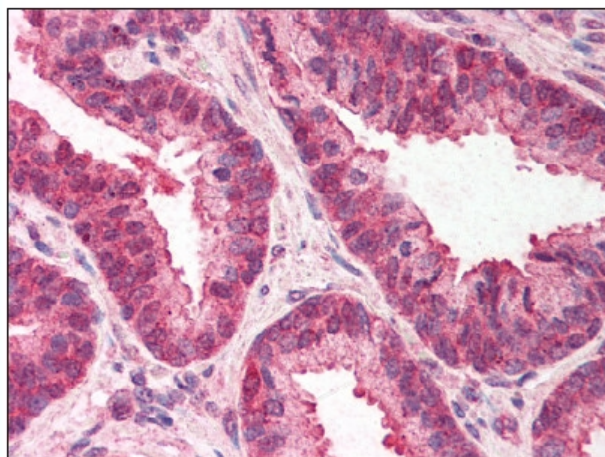
Product images:

Figure 1. Staining TMP21 in Prostate by Immunohistochemistry using Formalin-Fixed Paraffin-Embedded (FFPE) tissue.

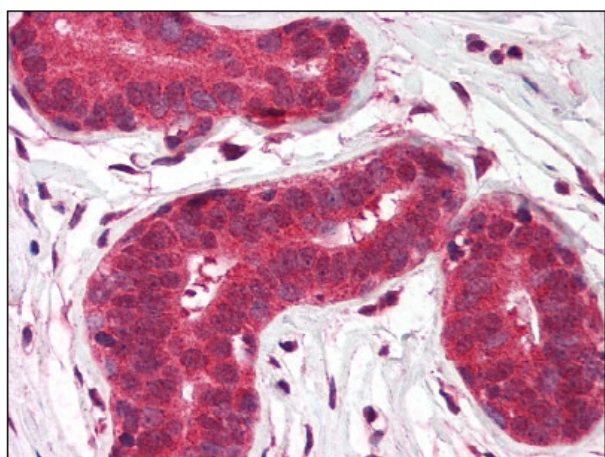


Figure 2. Staining TMP21 in Breast tissue by Immunohistochemistry using Formalin-Fixed Paraffin-Embedded (FFPE) tissue.