

Product datasheet for **AP07784PU-N**

TEP1 Rabbit Polyclonal Antibody

Product data:

Product Type:	Primary Antibodies
Applications:	IHC, WB
Recommended Dilution:	Immunohistochemistry on Paraffin Sections: 5 µg/ml. Western Blot.
Reactivity:	Human, Mouse, Rat
Host:	Rabbit
Clonality:	Polyclonal
Immunogen:	Synthetic Peptide corresponding to 20 Amino Acid peptide from near the amino terminus of human TP1.
Formulation:	Phosphate Buffered Saline PBS containing 0.02% Sodium Azide as preservative. State: Aff - Purified State: Liquid purified IgG fraction.
Concentration:	lot specific
Purification:	Immunoaffinity Chromatography.
Conjugation:	Unconjugated
Storage:	Store the antibody undiluted at 2-8°C for one month or (in aliquots) at -20°C for longer. Dilute only prior to immediate use. Avoid repeated freezing and thawing.
Stability:	Shelf life: one year from despatch.
Gene Name:	telomerase associated protein 1
Database Link:	Entrez Gene 7011 Human Q99973



[View online »](#)

Background:

Telomerase is an RNA-dependent DNA polymerase that uses an RNA component to add telomeric repeat sequences at the ends of chromosomes. Besides the RNA component which serves as the template that specifies the telomeric repeat, the telomerase complex contains a reverse transcriptase protein (TRT) and various accessory proteins including the telomerase-associated protein 1 (TEP1). Telomerase activity is low in most somatic cells, causing the gradual shortening of telomeres which can ultimately lead to telomere fusion and cell death. High levels of telomerase activity are widely seen in cancerous cells and while recent experiments have suggested that telomerase may be a viable target in cancer therapy, expression levels of TEP1 do not correlate with malignancy. At least two isoforms of TP1 are known to exist.

Synonyms:

Telomerase protein component 1, Telomerase protein 1

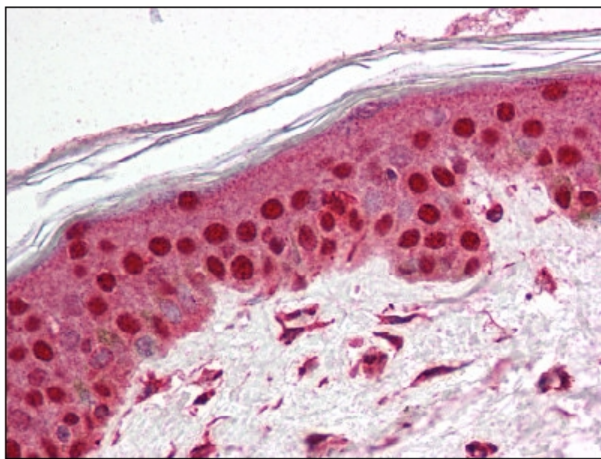
Product images:


Figure 1. Staining TEP1 in human Skin tissue by Immunohistochemistry using Formalin-Fixed Paraffin-Embedded (FFPE) tissue.

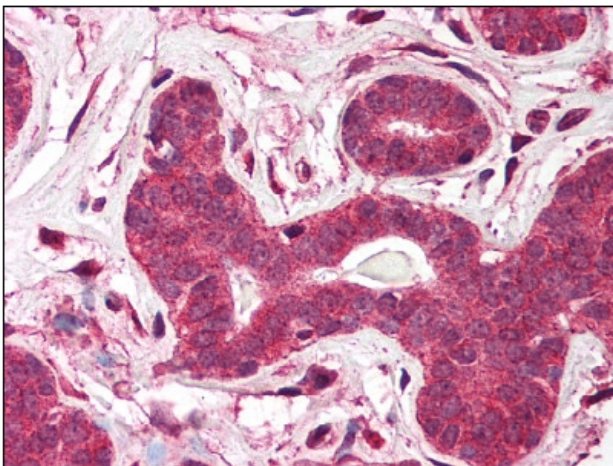


Figure 2. Staining TEP1 in human Breast tissue by Immunohistochemistry using Formalin-Fixed Paraffin-Embedded (FFPE) tissue.