

Product datasheet for **AP07775PU-N**

NALP1 (NLRP1) Rabbit Polyclonal Antibody

Product data:

Product Type:	Primary Antibodies
Applications:	IF, IHC, WB
Recommended Dilution:	Immunocytochemistry. Immunohistochemistry on Paraffin Sections: 2.5 µg/ml. Western Blot: 1 - 2 µg/ml.
Reactivity:	Human
Host:	Rabbit
Clonality:	Polyclonal
Immunogen:	Synthetic Peptide corresponding to 13 amino acids near the carboxy-terminus of human NALP1
Specificity:	This antibody detects NALP1 (CARD7).
Formulation:	Phosphate Buffered Saline PBS containing 0.02% Sodium Azide as preservative. State: Purified State: Liquid purified IgG fraction.
Concentration:	lot specific
Purification:	IgG Fractionation.
Conjugation:	Unconjugated
Storage:	Store the antibody undiluted at 2-8°C for one month or (in aliquots) at -20°C for longer. Dilute only prior to immediate use. Avoid repeated freezing and thawing.
Stability:	Shelf life: one year from despatch.
Gene Name:	NLR family, pyrin domain containing 1
Database Link:	Entrez Gene 22861 Human Q9C000



[View online »](#)

Background:

Death Effector Filament-forming Ced 4 like Apoptosis Protein (DEFCAP) is a novel apoptotic protein of the mammalian Ced 4 family. It has two isoforms: DEFCAP-Land DEFCAP-S. The deduced amino acid sequences of these two alternately spliced isoforms only differ by 44amino acids at the C-terminus. DEFCAP contains a caspase recruitment domain (CARD), a domain that with the proper stimulation can recruit caspases to form cytoplasmic structures called death effector filaments, which in turn initiate the apoptotic signaling pathway.

Synonyms:

DEFCAP, KIAA0926, NAC, NALP1

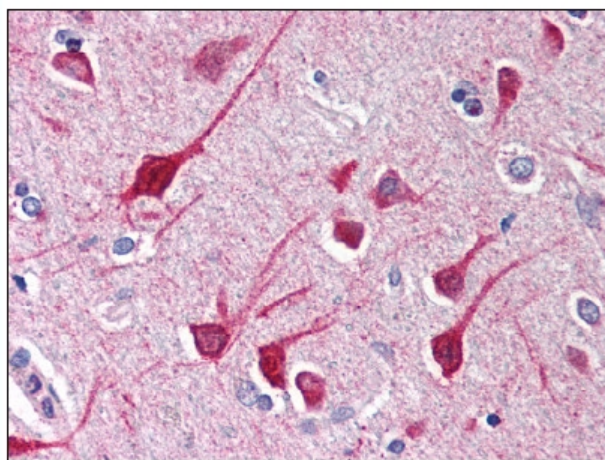
Product images:

Figure 1. Formalin-Fixed Paraffin-Embedded (FFPE) on Brain, Cortex.