

Product datasheet for **AP07771PU-N**

SIN1 (MAPKAP1) (N-term) Rabbit Polyclonal Antibody

Product data:

Product Type:	Primary Antibodies
Applications:	IHC, WB
Recommended Dilution:	Immunohistochemistry on Paraffin Sections: 2.5 µg/ml. Western Blot.
Reactivity:	Human, Mouse, Rat
Host:	Rabbit
Clonality:	Polyclonal
Immunogen:	Synthetic Peptide corresponding to 19 amino acid peptide from near the amino terminus of human MAPKAP1.
Specificity:	This antibody recognises SAPK-interacting Protein 1 (MAPKAP1).
Formulation:	Phosphate Buffered Saline PBS containing 0.02% Sodium Azide as preservative. State: Aff - Purified State: Liquid purified IgG fraction.
Concentration:	lot specific
Purification:	Immunoaffinity Chromatography.
Conjugation:	Unconjugated
Storage:	Store the antibody undiluted at 2-8°C for one month or (in aliquots) at -20°C for longer. Dilute only prior to immediate use. Avoid repeated freezing and thawing.
Stability:	Shelf life: one year from despatch.
Gene Name:	mitogen-activated protein kinase associated protein 1
Database Link:	Entrez Gene 79109 Human Q9BPZ7
Background:	This gene encodes a protein that is highly similar to the yeast SIN1 protein, a stress-activated protein kinase. Alternatively spliced transcript variants encoding distinct isoforms have been described. Alternate polyadenylation sites as well as alternate 3' UTRs have been identified for transcripts of this gene.



[View online »](#)

Synonyms: TORC2 subunit MAPKAP1, MAPKAP1, SIN1, mSIN1, SAPK-interacting protein 1

Product images:

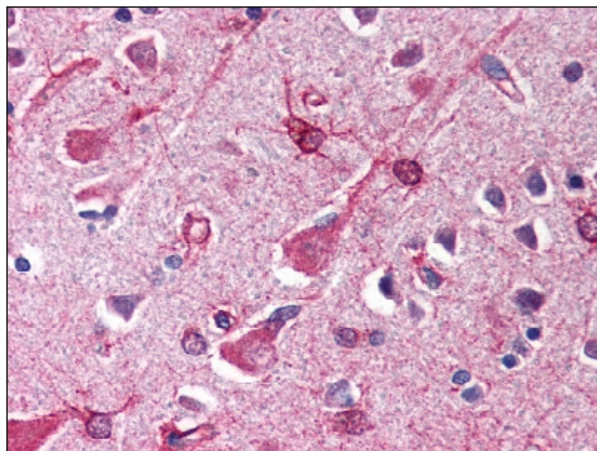


Figure 1. Formalin-Fixed Paraffin-Embedded (FFPE) on Brain, Cortex.