

Product datasheet for **AP07737PU-N**

SnoN (SKIL) (N-term) Rabbit Polyclonal Antibody

Product data:

Product Type:	Primary Antibodies
Applications:	IHC, WB
Recommended Dilution:	Immunohistochemistry on Paraffin Sections: 2.5 µg/ml. Western Blot.
Reactivity:	Human, Mouse, Rat
Host:	Rabbit
Clonality:	Polyclonal
Immunogen:	Synthetic Peptide corresponding to 16 amino acid peptide from near the amino terminus of human SNON
Specificity:	16 amino acid peptide from near the amino terminus of human SnoN.
Formulation:	Phosphate Buffered Saline PBS containing 0.02% Sodium Azide as preservative State: Purified State: Liquid purified IgG fraction
Concentration:	lot specific
Conjugation:	Unconjugated
Storage:	Store the antibody undiluted at 2-8°C for one month or (in aliquots) at -20°C for longer. Dilute only prior to immediate use. Avoid repeated freezing and thawing.
Stability:	Shelf life: one year from despatch.
Gene Name:	SKI-like proto-oncogene
Database Link:	Entrez Gene 6498 Human P12757
Synonyms:	Ski-like protein, Ski-related protein, Ski-related novel protein N, Ski-related oncogene, SNO, SnoA, Snol



[View online »](#)

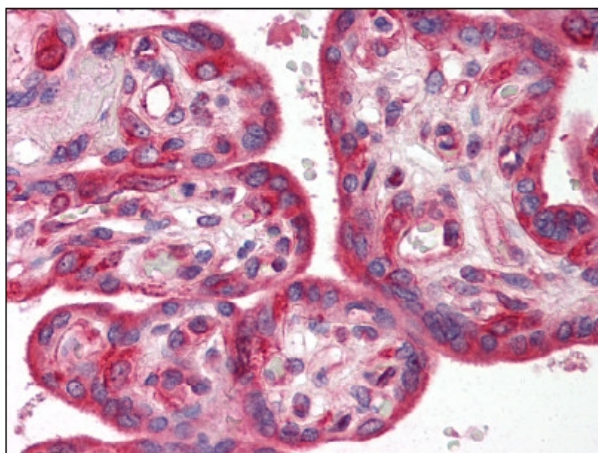
Product images:

Figure 1. Formalin-Fixed Paraffin-Embedded (FFPE) on Placenta.

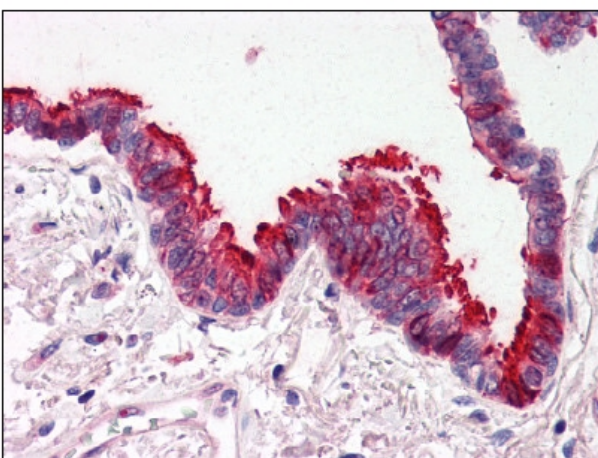


Figure 2. Formalin-Fixed Paraffin-Embedded (FFPE) on Lung, Respiratory Epithelium.