

Product datasheet for **AP07735PU-N**

SIRP alpha (SIRPA) (C-term) Rabbit Polyclonal Antibody

Product data:

| | |
|-----------------------|-----------------------------------------------------------------------------------------------------------------------------------------|
| Product Type: | Primary Antibodies |
| Applications: | IF, IHC, WB |
| Recommended Dilution: | Immunocytochemistry. Immunohistochemistry on Paraffin Sections: 2.5 µg/ml. Western Blot: 1/1000 - 1/2000. |
| Reactivity: | Human, Mouse, Rat |
| Host: | Rabbit |
| Clonality: | Polyclonal |
| Immunogen: | Synthetic Peptide - KLH conjugated corresponding to amino acids near the carboxy terminus of Human SIRPa. |
| Specificity: | Recognizes CD172a / SIRPA. |
| Formulation: | Phosphate Buffered Saline PBS containing 0.02% Sodium Azide as preservative. State: Purified State: Liquid purified IgG fraction. |
| Concentration: | lot specific |
| Purification: | DEAE-column Chromatography. |
| Conjugation: | Unconjugated |
| Storage: | Store the antibody undiluted at 2-8°C |
| Stability: | Shelf life: one year from despatch. |
| Gene Name: | signal regulatory protein alpha |
| Database Link: | Entrez Gene 140885 Human P78324 |



[View online »](#)

Background:

Protein tyrosine phosphatases (PTPases) SHP-1 and SHP-2 are critical regulators in the intracellular signaling pathways that result in cell responses such as mitosis, differentiation, migration, survival, transformation or death. SHP-2 is a signal transducer for several receptor tyrosine kinases and cytokine receptors. A novel SHP-2 associated glycoprotein was recently cloned from human, rat, mouse and cattle by several labs and was designated SIRPa, SHPS-1, MyD-1, BIT and p84. SIRPa is a new gene family containing at least fifteen members. SIRPa is a substrate of many activated tyrosine kinases such as insulin receptor, EGFR, PDGFR and src, and a specific docking protein for SHP-2. SIRPa has regulatory effects on cellular responses induced by serum, growth factors, insulin, oncogenes, growth hormones and cell adhesion and plays a general role in different physiological and pathological processes.

Synonyms:

SHP substrate 1, SHPS-1, Sirp-alpha-2, Sirp-alpha-3, MyD-1 antigen, p84, BIT, MFR, MYD1, PTPNS1, SHPS1

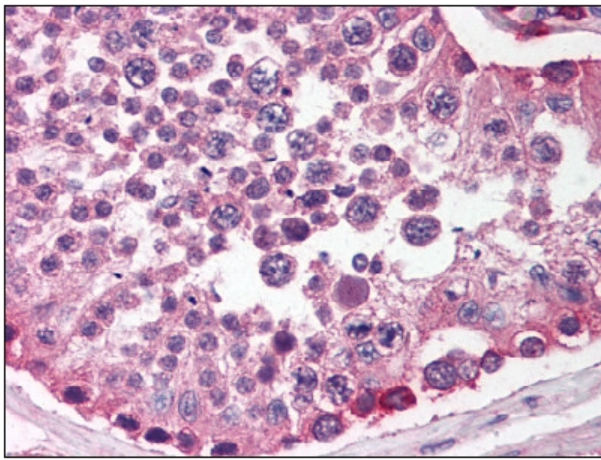
Product images:

Figure 1. Formalin-Fixed Paraffin-Embedded (FFPE) on Testis.

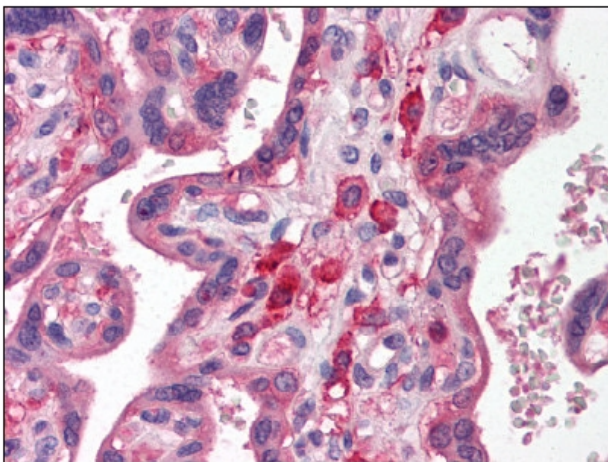


Figure 2. Formalin-Fixed Paraffin-Embedded (FFPE) on Placenta.