

Product datasheet for **AP07731PU-N**

SCO2 Rabbit Polyclonal Antibody

Product data:

Product Type:	Primary Antibodies
Applications:	IHC, WB
Recommended Dilution:	Immunohistochemistry on Paraffin Sections: 2.5 µg/ml. Western Blot.
Reactivity:	Human
Host:	Rabbit
Clonality:	Polyclonal
Immunogen:	SCO2 antibody was raised against Synthetic Peptide (-KLH conjugated) corresponding to 19 Amino Acid peptide from near the carboxy terminus of Human SCO2.
Specificity:	Recognizes SCO Cytochrome Oxidase Deficient Homolog 2 (SCO2).
Formulation:	Phosphate Buffered Saline PBS containing 0.02% Sodium Azide as preservative. State: Purified State: Liquid purified IgG fraction.
Concentration:	lot specific
Conjugation:	Unconjugated
Storage:	Store the antibody undiluted at 2-8°C for one month or (in aliquots) at -20°C for longer. Dilute only prior to immediate use. Avoid repeated freezing and thawing.
Stability:	Shelf life: one year from despatch.
Gene Name:	SCO2 cytochrome c oxidase assembly protein
Database Link:	Entrez Gene 9997 Human O43819
Background:	Mammalian cytochrome c oxidase (COX) catalyzes the transfer of reducing equivalents from Cytochrome C to molecular oxygen and pumps protons across the inner mitochondrial membrane. In yeast, 2 related COX assembly genes, SCO1 and SCO2 (synthesis of Cytochrome C Oxidase), enable subunits 1 and 2 to be incorporated into the holoprotein. This gene is the human homolog of the yeast SCO2 gene.
Synonyms:	MGC125823; MGC125825; OTTHUMP00000196773; SCO1L



[View online »](#)

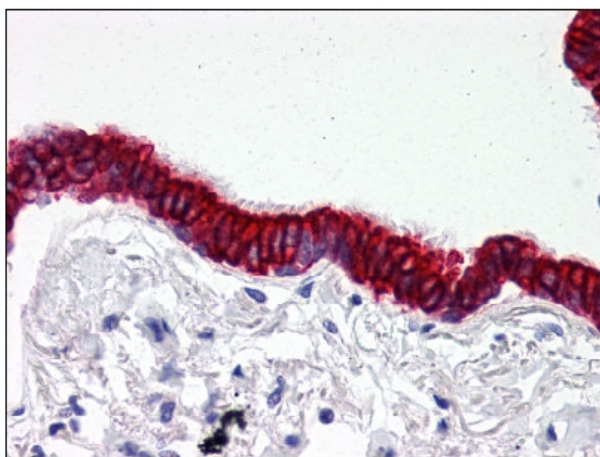
Product images:

Figure 1. SCO2 antibody staining of Formalin-Fixed Paraffin-Embedded (FFPE) Lung, Respiratory Epithelium.

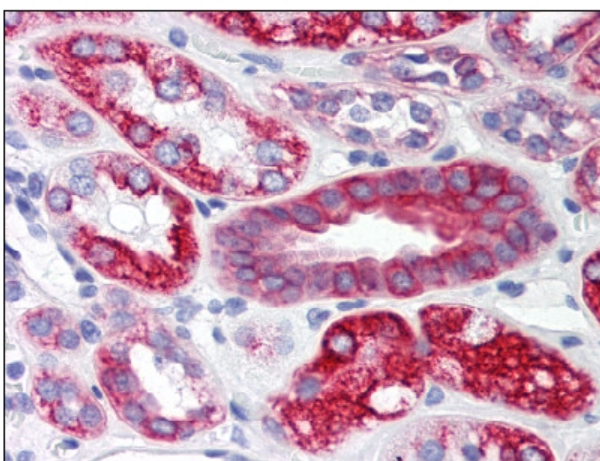


Figure 2. SCO2 antibody staining of Formalin-Fixed Paraffin-Embedded (FFPE) Kidney.