

Product datasheet for **AP07723PU-N**

PD1 (PDCD1) Rabbit Polyclonal Antibody

Product data:

Product Type:	Primary Antibodies
Applications:	IF, IHC, WB
Recommended Dilution:	Immunohistochemistry on FFPE-Sections: ~2.5 - 5 µg/ml (after heat induced antigen retrieval in pH 6.0 citrate buffer). Immunofluorescence. Western Blot. Expect a band at ~ 47 kD in size. THP-1 cell lysate can be used as positive control.
Reactivity:	Human, Mouse
Host:	Rabbit
Clonality:	Polyclonal
Immunogen:	Synthetic peptide corresponding to 16 Amino Acid from near the carboxy terminus of Human PDCD1.
Specificity:	This antibody is specific to CD279/PDCD1
Formulation:	PBS containing 0.02% Sodium Azide as preservative. State: Purified State: Liquid purified IgG fraction
Concentration:	lot specific
Purification:	Immunoaffinity Chromatography
Conjugation:	Unconjugated
Storage:	Store the antibody undiluted at 2-8°C for up to 3 months or at -20°C for longer. Avoid repeated freezing and thawing.
Stability:	Shelf life: one year from despatch.
Gene Name:	programmed cell death 1
Database Link:	Entrez Gene 5133 Human Q15116



[View online »](#)

Background:

This gene encodes a cell surface membrane protein of the immunoglobulin superfamily. This protein is expressed in pro-B-cells and is thought to play a role in their differentiation. In mice, expression of this gene is induced in the thymus when anti-CD3 antibodies are injected and large numbers of thymocytes undergo apoptosis. Mice deficient for this gene bred on a BALB/c background developed dilated cardiomyopathy and died from congestive heart failure. These studies suggest that this gene product may also be important in T cell function and contribute to the prevention of autoimmune diseases.

Synonyms:

Protein PD-1, hPD-1, PDCD1

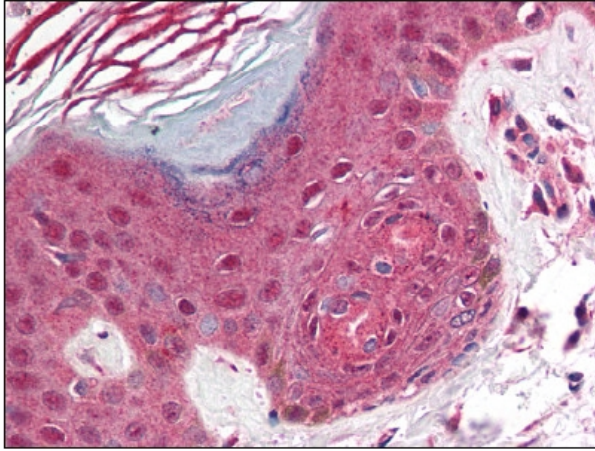
Product images:

Figure 1. Formalin-Fixed Paraffin-Embedded (FFPE) on Skin.