

## Product datasheet for **AP07703PU-N**

### LRP6 (Internal) Goat Polyclonal Antibody

#### Product data:

Product Type:	Primary Antibodies
Applications:	ELISA, IHC
Recommended Dilution:	<b>ELISA:</b> 1/64000. <b>Immunohistochemistry on Paraffin Sections:</b> 5 µg/ml.
Reactivity:	Human, Canine, Equine, Hamster, Monkey, Porcine, Rabbit, Rat
Host:	Goat
Clonality:	Polyclonal
Immunogen:	Synthetic peptide from an internal region of human LRP6 (NP_002327.2)
Specificity:	This antibody recognizes an epitope corresponding to amino acids 1546-1560 of Human LRP6.
Formulation:	Tris-buffered saline, pH 7.3, 0.5% BSA, 0.02% sodium azide State: Aff - Purified State: Liquid purified IgG fraction
Concentration:	lot specific
Purification:	Immunoaffinity Chromatography
Conjugation:	Unconjugated
Storage:	Upon receipt, store undiluted (in aliquots) at -20°C. Avoid repeated freezing and thawing.
Stability:	Shelf life: one year from despatch.
Gene Name:	LDL receptor related protein 6
Database Link:	<a href="#">Entrez Gene 4040 Human O75581</a>
Background:	Essential for the Wnt/beta catenin signaling pathway, probably by acting as a coreceptor together with Frizzled for Wnt. Specific high-affinity receptor for DKK1 and DKK2, but not DKK3. The interaction with DKK1 blocks LRP6-mediated Wnt/beta catenin signaling via LRP6 removal via Kremen proteins-mediated endocytosis. Defects in LRP6 are the cause of autosomal dominant coronary artery disease type 2 (ADCAD2). Subcellular location: Membrane and Single-pass type I membrane protein.



[View online »](#)

Synonyms: LRP-6

**Product images:**

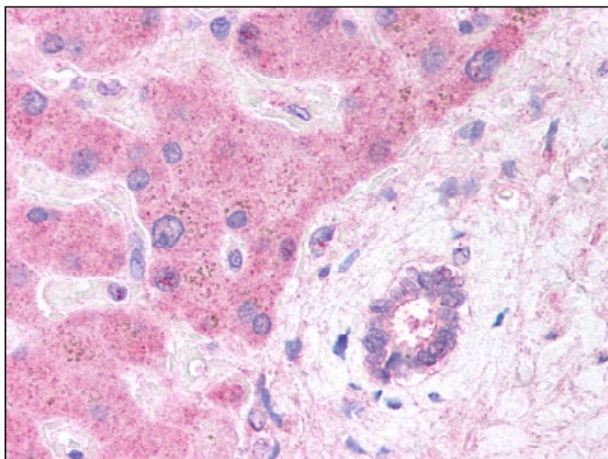


Figure 1. Formalin-Fixed Paraffin-Embedded (FFPE) on Hepatocytes and Bile Duct.