

Product datasheet for **AP07693PU-N**

Precerebellin (CBLN1) Rabbit Polyclonal Antibody

Product data:

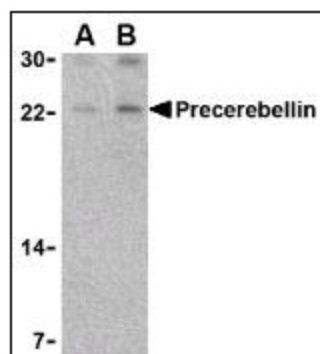
Product Type:	Primary Antibodies
Applications:	IHC, WB
Recommended Dilution:	Immunohistochemistry on Paraffin Sections: 10 µg/ml. Western Blot: 2 - 4 µg/ml.
Reactivity:	Human, Mouse, Rat
Host:	Rabbit
Clonality:	Polyclonal
Immunogen:	Synthetic peptide corresponding to 15 amino acid peptide from the middle of Human Precerebellin.
Specificity:	15 amino acid peptide from the middle of Human Precerebellin.
Formulation:	PBS, containing 0.02% Sodium Azide as preservative. State: Aff - Purified State: Liquid purified IgG fraction.
Concentration:	lot specific
Purification:	Immunoaffinity Chromatography.
Conjugation:	Unconjugated
Storage:	Store the antibody undiluted at 2-8°C for one month or (in aliquots) at -20°C for longer. Dilute only prior to immediate use. Avoid repeated freezing and thawing.
Stability:	Shelf life: one year from despatch.
Gene Name:	cerebellin 1 precursor
Database Link:	Entrez Gene 869 Human P23435
Background:	CBLN1 is required for synapse integrity and synaptic plasticity. It is required for the ER export and secretion of CBLN3. CBLN1 exerts neuromodulatory functions. It directly stimulates norepinephrine release via the adenylate cyclase/PKA-dependent signaling pathway; and indirectly enhances adrenocortical secretion in vivo, through a paracrine mechanism involving medullary catecholamine release.



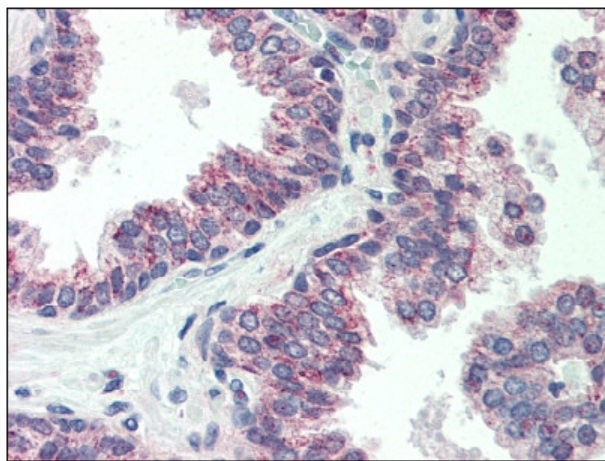
[View online »](#)

Synonyms: CBLN1, Precerebellin

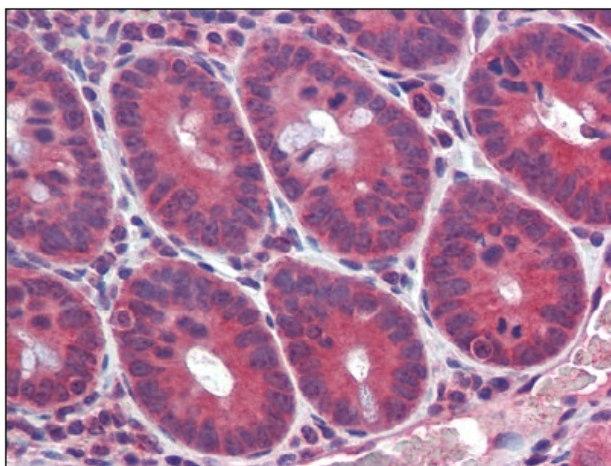
Product images:



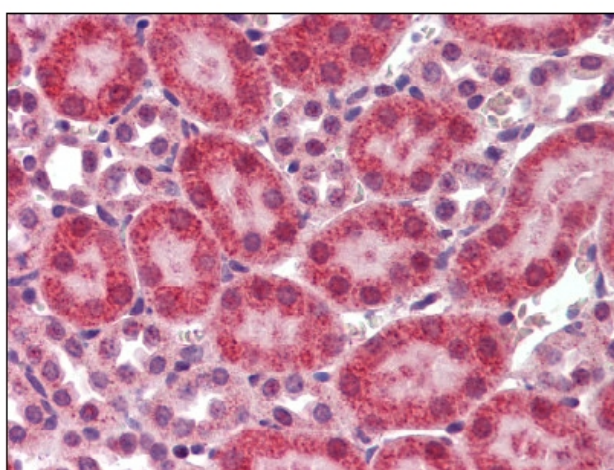
Western blot analysis of Precerebellin in Mouse cerebellum lysate with at (A) 2 and (B) 4 ug/ml.



CBLN1 Antibody staining of Formalin-Fixed Paraffin-Embedded Human Prostate at 10 ug/ml followed by biotinylated goat anti-rabbit IgG secondary antibody, alkaline phosphatase-streptavidin and chromogen.



Mouse small intestine: Formalin-Fixed, Paraffin-Embedded (FFPE)



Mouse kidney: Formalin-Fixed, Paraffin-Embedded (FFPE)