

Product datasheet for **AP07690PU-N**

Caspase 2 (CASP2) Rabbit Polyclonal Antibody

Product data:

Product Type:	Primary Antibodies
Applications:	IF, IHC, WB
Recommended Dilution:	Immunocytochemistry. Immunohistochemistry on Paraffin Sections: 10 µg/ml. Western Blot: 1 µg/ml.
Reactivity:	Human, Mouse
Host:	Rabbit
Clonality:	Polyclonal
Immunogen:	Synthetic Peptide corresponding to 16 Amino Acid peptide from the amino-terminus of human Caspase-2.
Formulation:	Phosphate Buffered Saline PBS, containing 0.02% Sodium Azide as preservative. State: Aff - Purified State: Liquid purified IgG fraction.
Concentration:	lot specific
Purification:	Immunoaffinity Chromatography.
Conjugation:	Unconjugated
Storage:	Store the antibody undiluted at 2-8°C for one month or (in aliquots) at -20°C for longer. Dilute only prior to immediate use. Avoid repeated freezing and thawing.
Stability:	Shelf life: one year from despatch.
Gene Name:	caspase 2
Database Link:	Entrez Gene 835 Human P42575



[View online »](#)

Background:

Caspases are a family of cysteine proteases that can be divided into the apoptotic and inflammatory caspase subfamilies. Unlike the apoptotic caspases, members of the inflammatory subfamily are generally not involved in cell death but are associated with the immune response to microbial pathogens. Members of this subfamily include caspase-1, -4, -5, and -12 and can activate proinflammatory cytokines such as IL-1b and IL-18. Although phylogenetically similar to this subfamily, Caspase-2 is thought to be involved in stress-induced apoptosis. Caspase-2 has two major isoforms; overexpression on the long form results in apoptosis while that of the short form suppresses cell death.

Synonyms:

CASP-2, CASP2, ICH1, ICH-1 protease, NEDD2

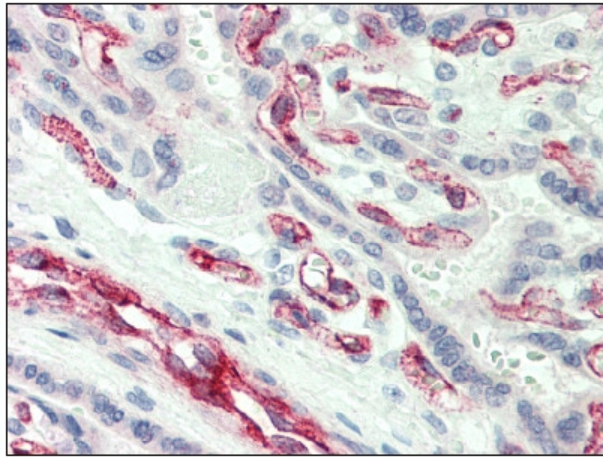
Product images:

Figure 1. Formalin-Fixed Paraffin-Embedded (FFPE) on Placenta.