

Product datasheet for **AP07682PU-N**

CTRP6 (C1QTNF6) Rabbit Polyclonal Antibody

Product data:

Product Type:	Primary Antibodies
Applications:	IHC, WB
Recommended Dilution:	Immunohistochemistry on Paraffin Sections: 10 µg/ml. Western Blot: 1 µg/ml.
Reactivity:	Human, Mouse, Rat
Host:	Rabbit
Clonality:	Polyclonal
Immunogen:	Synthetic peptide corresponding to 15 amino acid peptide from near the center of human CTRP6.
Formulation:	Phosphate Buffered Saline PBS, containing 0.02% Sodium Azide as preservative. State: Aff - Purified State: Liquid purified IgG fraction.
Concentration:	lot specific
Purification:	Immunoaffinity Chromatography.
Conjugation:	Unconjugated
Storage:	Store the antibody undiluted at 2-8°C for one month or (in aliquots) at -20°C for longer. Dilute only prior to immediate use. Avoid repeated freezing and thawing.
Stability:	Shelf life: one year from despatch.
Gene Name:	C1q and tumor necrosis factor related protein 6
Database Link:	Entrez Gene 114904 Human Q9BXI9



[View online »](#)

Background:

Adipose tissue of an organism plays a major role in regulating physiologic and pathologic processes such as metabolism and immunity by producing and secreting a variety of bioactive molecules termed adipokines. One highly conserved family of adipokines is adiponectin/ACRP30 and its structural and functional paralogs, the C1q/tumor necrosis factor- α -related proteins (CTRPs) 1-7. Unlike adiponectin, which is expressed exclusively by differentiated adipocytes, the CTRPs are expressed in a wide variety of tissues. These proteins are thought to act mainly on liver and muscle tissue to control glucose and lipid metabolism. An analysis of the crystal structure of adiponectin revealed a structural and evolutionary link between TNF and C1q-containing proteins, suggesting that these proteins arose from a common ancestral innate immunity gene.

Synonyms:

CTRP6

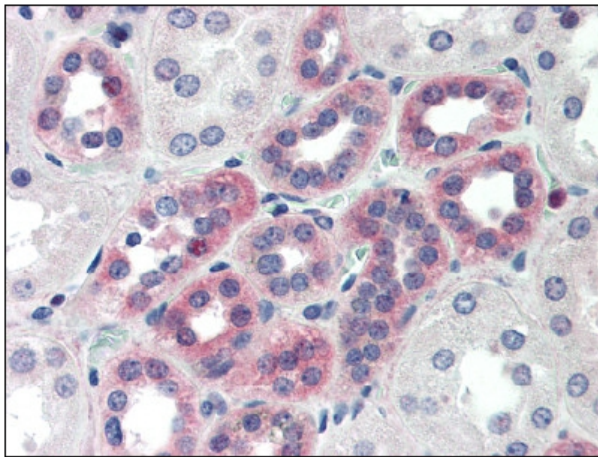
Product images:

Figure 1. Formalin-Fixed Paraffin-Embedded (FFPE) on Kidney.