

Product datasheet for **AP07638PU-N**

SPANX (SPANXC) Rabbit Polyclonal Antibody

Product data:

Product Type:	Primary Antibodies
Applications:	ELISA, IHC, WB
Recommended Dilution:	ELISA: 1/10000 - 1/50000. Immunohistochemistry on Paraffin Sections: 5 µg/ml. Western Blot: 1/500 - 1/3000.
Reactivity:	Human, Monkey
Host:	Rabbit
Clonality:	Polyclonal
Immunogen:	Synthetic peptide corresponding to Amino Acids 31-47 of human SPANX-C protein.
Formulation:	0.02 M Potassium Phosphate, 0.15 M Sodium Chloride, pH 7.2 with 0.01% (w/v) Sodium Azide as preservative. State: Aff - Purified State: Liquid purified IgG fraction.
Concentration:	lot specific
Purification:	Immunoaffinity Chromatography.
Conjugation:	Unconjugated
Storage:	Store the antibody undiluted (in aliquots) at -20°C. Dilute only prior to immediate use. Avoid repeated freezing and thawing.
Stability:	Shelf life: one year from despatch.
Gene Name:	SPANX family member C
Database Link:	Entrez Gene 64663 Human Q9NY87
Background:	Human Sperm Proteins Associated with the Nucleus on X-chromosome (SPANX) are relatively low molecular weight cytoplasmic proteins found in testis and sperm. Their expression in other tissues indicates malignancies. Family members are observed as proteins that range from 15 to 20 kDa.
Synonyms:	SPANX family member C, SPAN-Xc, SPANX-C, CTp11, CT11.3



[View online »](#)

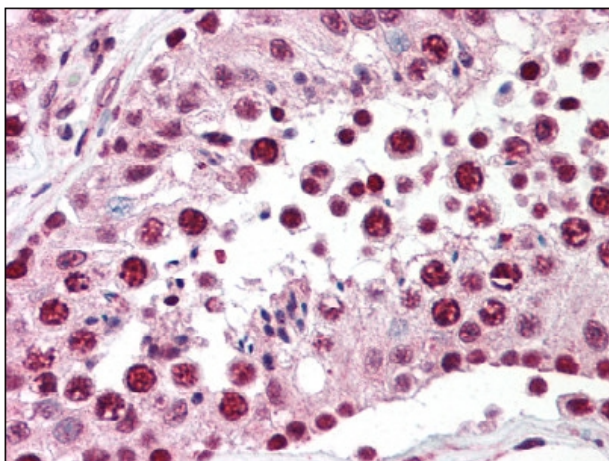
Product images:

Figure 1. Formalin-Fixed Paraffin-Embedded (FFPE) on Testis.