

## Product datasheet for **AP07627PU-N**

### **RAD52 Rabbit Polyclonal Antibody**

#### **Product data:**

Product Type:	Primary Antibodies
Applications:	ELISA, IHC, WB
Recommended Dilution:	<b>ELISA:</b> 1/5000 - 1/20000. <b>Immunohistochemistry on Paraffin Sections:</b> 2.5 µg/ml. <b>Western Blot:</b> 1/500 - 1/2000.
Reactivity:	Human
Host:	Rabbit
Clonality:	Polyclonal
Immunogen:	Synthetic peptide corresponding to AA 360-375 of the Human Rad 52 protein.
Formulation:	0.02 M Potassium Phosphate, 0.15 M Sodium Chloride, pH 7.2 with 0.01% (w/v) Sodium Azide as preservative. State: Aff - Purified State: Liquid purified IgG fraction.
Concentration:	lot specific
Purification:	Immunoaffinity Chromatography.
Conjugation:	Unconjugated
Storage:	Store the antibody undiluted (in aliquots) at -20°C. Dilute only prior to immediate use. Avoid repeated freezing and thawing.
Stability:	Shelf life: one year from despatch.
Gene Name:	RAD52 homolog, DNA repair protein
Database Link:	<a href="#">Entrez Gene 5893 Human P43351</a>



[View online »](#)

**Background:**

The protein encoded by this gene shares similarity with *Saccharomyces cerevisiae* Rad52, a protein important for DNA double-strand break repair and homologous recombination. This gene product was shown to bind single-stranded DNA ends, and mediate the DNA-DNA interaction necessary for the annealing of complementary DNA strands. It was also found to interact with DNA recombination protein RAD51, which suggested its role in RAD51 related DNA recombination and repair. Four alternatively spliced transcript variants encoding different isoforms have been reported for this gene. The alpha variant encodes the longest isoform that contains an identical N-terminus, but a distinct C-terminus, as compared to other isoforms (beta, delta, and gamma).

**Synonyms:**

RAD52

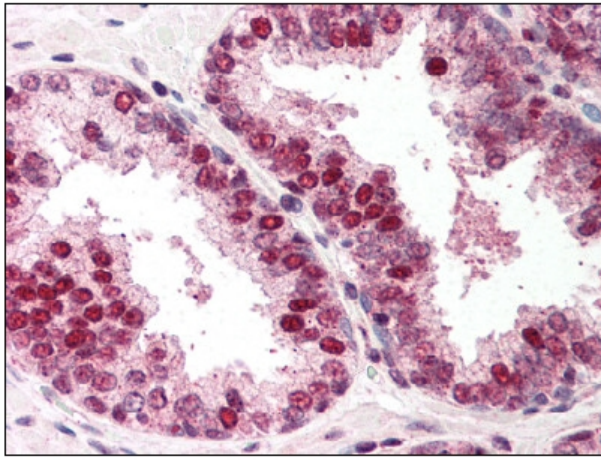
**Product images:**

Figure 1. Formalin-Fixed Paraffin-Embedded (FFPE) on Prostate.