

Product datasheet for **AP07623PU-N**

DNA PKcs (PRKDC) pThr2609 (2604-2614) Rabbit Polyclonal Antibody

Product data:

Product Type:	Primary Antibodies
Applications:	ELISA, IHC, WB
Recommended Dilution:	ELISA: 1/1000 - 1/5000. Immunohistochemistry on Paraffin Sections: 5 µg/ml. Western Blot: 1/250 - 1/2000.
Reactivity:	Human, Canine, Chicken, Equine, Mouse, Rat
Host:	Rabbit
Clonality:	Polyclonal
Immunogen:	Synthetic peptide corresponding to aa 2604-2614 of Human DNA PKcs
Specificity:	This antibody recognizes PRKDC / DNA-PKcs at aa 2604-2614.
Formulation:	0.02M Potassium Phosphate, 0.15M Sodium Chloride, pH 7.2 with 0.01% (w/v) Sodium Azide as preservative State: Aff - Purified State: Liquid purified IgG fraction
Concentration:	lot specific
Purification:	Immunoaffinity Chromatography
Conjugation:	Unconjugated
Storage:	Store the antibody undiluted at 2-8°C for one month or (in aliquots) at -20°C for longer. Avoid repeated freezing and thawing.
Stability:	Shelf life: one year from despatch.
Gene Name:	protein kinase, DNA-activated, catalytic polypeptide
Database Link:	Entrez Gene 5591 Human P78527



[View online »](#)

Background:

DNA dependent Protein Kinase (also called DNAPK, DNPK1, HYRC1, Protein Kinase DNA Activated Catalytic Polypeptide, XRCC7 and p460) consists of the 460 kDa DNA PKcs and a heterodimeric regulatory complex comprised of p70 Ku and p80 Ku (Ku autoantigen). DNA PKcs is a nuclear protein serine/threonine kinase present in a wide variety of eukaryotic species. DNA PKcs phosphorylates transcription factors, Sp1, Oct-1, p53 and SV40 large T antigen. DNA PKcs is involved in repairing double stranded DNA breaks. At the onset of apoptosis, DNA PKcs is rapidly inactivated by cleavage of the catalytic subunit into smaller polypeptides. Proteolysis of DNA PKcs is inhibited by the cysteine protease inhibitors iodoacetamide and N-ethylmaleimide. Alternative splicing can occur for this protein to produce at least two isoforms.

Synonyms:

DNPK1, p460, HYRC, HYRC1

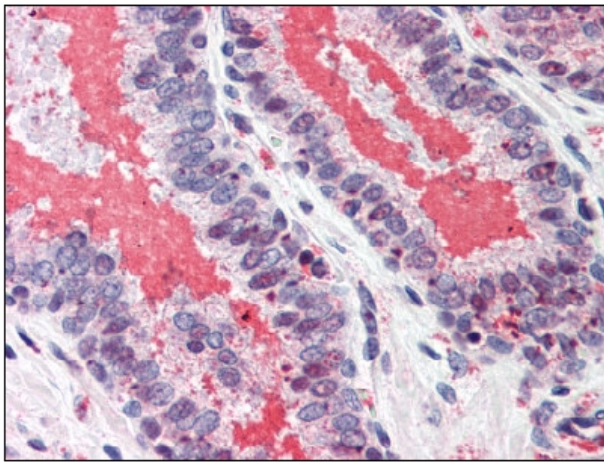
Product images:

Figure 1. Formalin-Fixed Paraffin-Embedded (FFPE) on Prostate.