

Product datasheet for **AP07617PU-N**

alpha 2 Macroglobulin (A2M) Goat Polyclonal Antibody

Product data:

Product Type:	Primary Antibodies
Applications:	ELISA, IHC, IP, WB
Recommended Dilution:	ELISA: 1/80000 - 1/400000. Immunohistochemistry on Paraffin Sections: 2.5 µg/ml. Immunoprecipitation. Western Blot: 1/2000 - 1/20000.
Reactivity:	Human
Host:	Goat
Isotype:	IgG
Clonality:	Polyclonal
Immunogen:	A2-Macroglobulin from Human Plasma.
Formulation:	0.02M Potassium Phosphate, 0.15M Sodium Chloride, pH 7.2 State: Purified State: Liquid purified IgG fraction Preservative: 0.01% (w/v) Sodium Azide
Concentration:	lot specific
Purification:	IgG fractionation
Conjugation:	Unconjugated
Storage:	Store undiluted at 2-8°C for one month or (in aliquots) at -20°C for longer. Avoid repeated freezing and thawing.
Stability:	Shelf life: one year from despatch.
Gene Name:	alpha-2-macroglobulin
Database Link:	Entrez Gene 2 Human P01023
Background:	Alpha-2-macroglobulin is a protease inhibitor and cytokine transporter. It inhibits many proteases, including trypsin, thrombin and collagenase. A2M is implicated in Alzheimer disease (AD) due to its ability to mediate the clearance and degradation of A-beta, the major component of beta-amyloid deposits.



[View online »](#)

Synonyms: Alpha-2-M, CPAMD5, Alpha 2 macroglobulin

Product images:

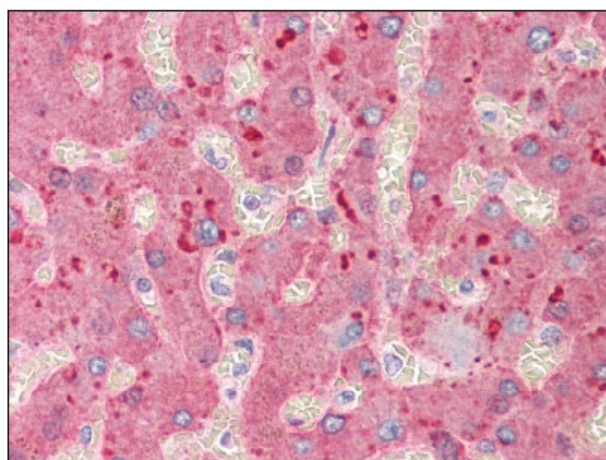


Figure 1. Formalin-Fixed Paraffin-Embedded (FFPE) on Liver.