

## Product datasheet for **AP07602PU-N**

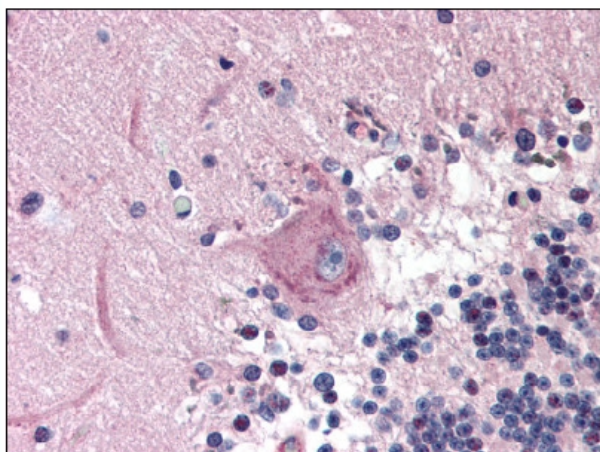
### **MAD2L2 Rabbit Polyclonal Antibody**

#### **Product data:**

Product Type:	Primary Antibodies
Applications:	ELISA, IF, IHC, WB
Recommended Dilution:	<b>ELISA:</b> 1/7500 - 1/30000. <b>Immunofluorescence.</b> <b>Immunohistochemistry on Paraffin Sections:</b> 10 µg/ml. <b>Western Blot:</b> 1/500 - 1/2000.
Reactivity:	Human
Host:	Rabbit
Clonality:	Polyclonal
Immunogen:	Synthetic peptide corresponding to aa 3-14 of Human MAD2L2.
Formulation:	0.02 M Potassium Phosphate, 0.15 M Sodium Chloride, pH 7.2 with 0.01% (w/v) Sodium Azide as preservative. State: Aff - Purified State: Liquid purified IgG fraction.
Concentration:	lot specific
Purification:	Immunoaffinity Chromatography.
Conjugation:	Unconjugated
Storage:	Store the antibody undiluted at 2-8°C for one month or (in aliquots) at -20°C for longer. Avoid repeated freezing and thawing.
Stability:	Shelf life: one year from despatch.
Gene Name:	MAD2 mitotic arrest deficient-like 2 (yeast)
Database Link:	<a href="#">Entrez Gene 10459 Human Q9UI95</a>
Background:	MAD2L2 is a component of the mitotic spindle assembly checkpoint that prevents the onset of anaphase until all chromosomes are properly aligned at the metaphase plate. MAD2L2 is a homolog of MAD2L1. MAD2L2 is also known as MAD2B, REV7 and mitotic arrest deficient-like 2 protein.
Synonyms:	Mitotic spindle assembly checkpoint protein MAD2B, MAD2B, REV7



[View online »](#)

**Product images:**

MAD2L2 antibody staining of Formalin-Fixed Paraffin-Embedded Human Brain, cerebellum at 10 ug/ml followed by biotinylated goat anti-rabbit IgG secondary antibody, alkaline phosphatase-streptavidin and chromogen.