

## Product datasheet for **AP07594PU-N**

### MYL9 (12-27) Rabbit Polyclonal Antibody

#### Product data:

Product Type:	Primary Antibodies
Applications:	ELISA, IHC, IP, WB
Recommended Dilution:	<b>ELISA:</b> 1/5000 - 1/20000. <b>Immunohistochemistry on Paraffin Sections:</b> 2.5 µg/ml. <b>Immunoprecipitation.</b> <b>Western Blot:</b> 1/500 - 1/2000.
Reactivity:	Human, Mouse, Rat, Mammalian
Host:	Rabbit
Clonality:	Polyclonal
Immunogen:	Synthetic peptide - KLH conjugated.
Specificity:	Amino acids 12-27 of Human Myosin light chain protein.
Formulation:	0.02M Potassium Phosphate, 0.15M Sodium Chloride, pH 7.2 with 0.01% (w/v) Sodium Azide as preservative. State: Aff - Purified State: Liquid purified IgG fraction.
Concentration:	lot specific
Purification:	Immunoaffinity Chromatography.
Conjugation:	Unconjugated
Storage:	Store the antibody undiluted at 2-8°C for one month or (in aliquots) at -20°C for longer. Avoid repeated freezing and thawing.
Stability:	Shelf life: one year from despatch.
Gene Name:	myosin light chain 9
Database Link:	<a href="#">Entrez Gene 10398 Human P24844</a>



[View online »](#)

**Background:**

Myosin is the major component of thick muscle filaments, and is a long asymmetric molecule containing a globular head and a long tail. The molecule consists of two heavy chains each ~200,000 daltons, and four light chains each ~16,000 - 21,000 daltons. Activation of smooth and cardiac muscle primarily involves pathways that increase calcium and myosin phosphorylation resulting in contraction. Myosin light chain phosphatase acts to regulate muscle contraction by dephosphorylating activated myosin light chain. The selected peptide sequence used to generate the polyclonal antibody is located near the amino terminal end of the polypeptide corresponding to the smooth/non-muscle form of myosin regulatory light chain found in cardiac myocytes in addition to smooth and non-muscle cells. This sequence differs from that of the sarcomeric/ cardiac form of myosin regulatory light chain that has a different sequence around the phosphorylation site. Human, Mouse and Rat have almost identical sequences.

**Synonyms:**

MLC2, MRLC1, MYRL2, Myosin RLC, MLC-2C, LC20, smooth muscle

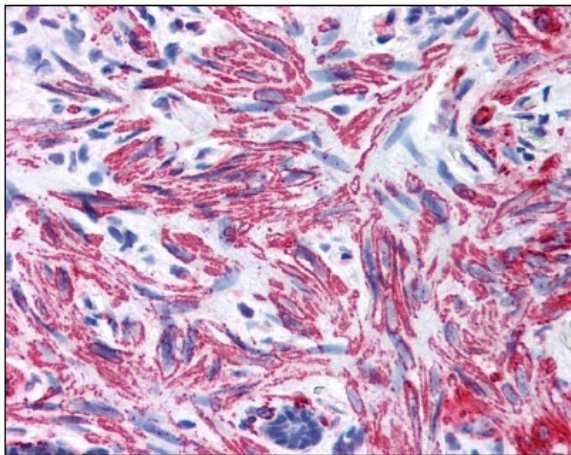
**Product images:**

Figure 1. Formalin-Fixed Paraffin-Embedded (FFPE) on Colon, Smooth Muscle.