

Product datasheet for **AP07590PU-N**

GRP94 (HSP90B1) Rabbit Polyclonal Antibody

Product data:

Product Type:	Primary Antibodies
Applications:	ELISA, IHC, WB
Recommended Dilution:	ELISA: 1/5000 - 1/25000. Immunohistochemistry on Paraffin Sections: 2.5 µg/ml. Western Blot: 1/500 - 1/2500.
Reactivity:	Chicken, Drosophila, Human, Monkey, Mouse, Rat
Host:	Rabbit
Clonality:	Polyclonal
Immunogen:	Synthetic peptide.
Specificity:	Amino acids 289-300 of human Hsp90 protein.
Formulation:	0.02 M Potassium Phosphate, 0.15 M Sodium Chloride, pH 7.2 with 0.01% (w/v) Sodium Azide as preservative. State: Aff - Purified State: Liquid purified IgG fraction.
Concentration:	lot specific
Purification:	Immunoaffinity Chromatography.
Conjugation:	Unconjugated
Storage:	Store the antibody undiluted at 2-8°C for one month or (in aliquots) at -20°C for longer. Avoid repeated freezing and thawing.
Stability:	Shelf life: one year from despatch.
Gene Name:	heat shock protein 90kDa beta family member 1
Database Link:	Entrez Gene 22027 Mouse Entrez Gene 362862 Rat Entrez Gene 699568 Monkey Entrez Gene 7184 Human P14625



[View online »](#)

Background:

Hsp90 is a member of the heat shock protein 90 family that functions as a molecular chaperone and has ATPase activity. Hsp90 family proteins are highly conserved between isoforms and species. Several signal transduction pathways depend on Hsp90 function including erbB2, steroid hormone receptors (such as androgen, progesterone, glucocorticoid, and aryl-hydrocarbon), and hypoxia sensing (Hif1 alpha). Recent reports show that tumor cells are more sensitive to Hsp90 inhibition and that Hsp90 from tumor cells is more sensitive to small molecule inhibitors (eg 17AAG). The mechanism of this differential sensitivity of normal versus tumor Hsp90 is not known (although mutation has been ruled out). One possible mechanism may be differences in post-translational modification of tumor Hsp90. Hsp90 is a cytoplasmic protein that forms a homodimer in vivo, and interacts with TOM34, AHSA1, HDAC6 and SMYD3.

Synonyms:

Tumor rejection antigen 1, GRP94

Protein Families:

Druggable Genome

Protein Pathways:

NOD-like receptor signaling pathway, Pathways in cancer, Prostate cancer

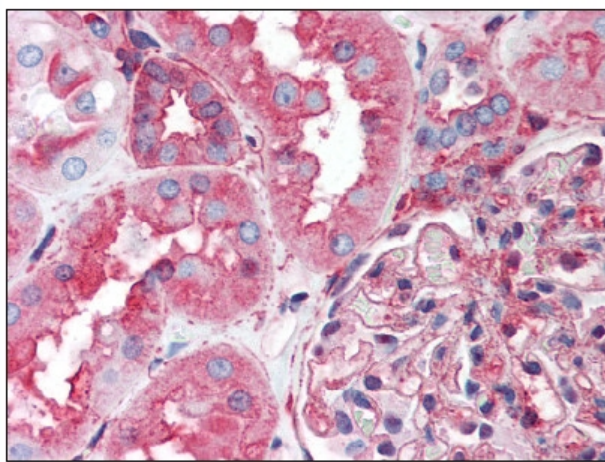
Product images:

Figure 1. Formalin-Fixed Paraffin-Embedded (FFPE) on Kidney.