

## Product datasheet for **AP07581PU-N**

### EIF3F (114-125) Rabbit Polyclonal Antibody

#### Product data:

Product Type:	Primary Antibodies
Applications:	ELISA, IF, IHC, IP, WB
Recommended Dilution:	<b>ELISA:</b> 1/10000 - 1/40000. <b>Immunofluorescence.</b> <b>Immunohistochemistry on Paraffin Sections:</b> 2.5 µg/ml. <b>Immunoprecipitation.</b> <b>Western Blot:</b> 1/200 - 1/2000.
Reactivity:	Bovine, Chicken, Human, Mouse, Rat, Drosophila, Fish, Monkey
Host:	Rabbit
Clonality:	Polyclonal
Immunogen:	Synthetic peptide from aa 114-125 of human EIF3F
Specificity:	This antibody detects amino acids 114-125 of Human eIF3f protein.
Formulation:	0.02M Potassium Phosphate, 0.15M Sodium Chloride, pH 7.2 with 0.01% (w/v) Sodium Azide as preservative. State: Aff - Purified State: Liquid purified IgG fraction
Concentration:	lot specific
Purification:	Immunoaffinity Chromatography
Conjugation:	Unconjugated
Storage:	Store the antibody undiluted at 2-8°C for one month or (in aliquots) at -20°C for longer. Avoid repeated freezing and thawing.
Stability:	Shelf life: one year from despatch.
Gene Name:	eukaryotic translation initiation factor 3 subunit F
Database Link:	<a href="#">Entrez Gene 8665 Human</a> <a href="#">O00303</a>



[View online »](#)

**Background:** Eukaryotic translation initiation factor 3 subunit F also known as eIF3f, eIF-3 epsilon, and eIF3 p47 subunit, binds to the 40S ribosome and promotes the binding of methionyl-tRNA and mRNA. EIF3f also associates with the complex p170-eIF3. eIF-3 is composed of at least 12 different subunits, eIF3f is one of these subunits.

**Synonyms:** eIF-3-epsilon, eIF3 p47, Eukaryotic translation initiation factor 3 subunit F

**Product images:**

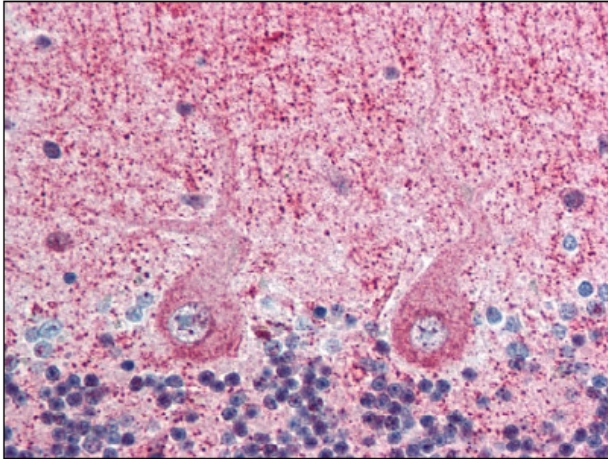


Figure 1. EIF3F antibody staining of Formalin-Fixed Paraffin-Embedded Human Brain, cerebellum at 2.5 ug/ml followed by biotinylated Goat anti-Rabbit IgG secondary antibody, Alkaline Phosphatase-Streptavidin and Chromogen.