

Product datasheet for **AP07573SU-N**

Cullin 3 (CUL3) Rabbit Polyclonal Antibody

Product data:

Product Type:	Primary Antibodies
Applications:	ELISA, IHC, IP, WB
Recommended Dilution:	ELISA: 1/2000 - 1/10000. Immunohistochemistry on Paraffin Sections: 1/500. Immunoprecipitation. Western Blot: 1/500 - 1/1000.
Reactivity:	Human, Mouse
Host:	Rabbit
Clonality:	Polyclonal
Immunogen:	Synthetic peptide
Specificity:	This antibody reacts to amino acids 1-12 of Cul3 (N-terminus) coupled to KLH.
Formulation:	State: Liquid purified Ig containing 0.01% (w/v) sodium azide
Concentration:	lot specific
Purification:	Delipidation and defibrination
Conjugation:	Unconjugated
Storage:	Store the antibody at -20°C. Avoid repeated freezing and thawing.
Stability:	Shelf life: one year from despatch.
Gene Name:	cullin 3
Database Link:	Entrez Gene 8452 Human Q13618



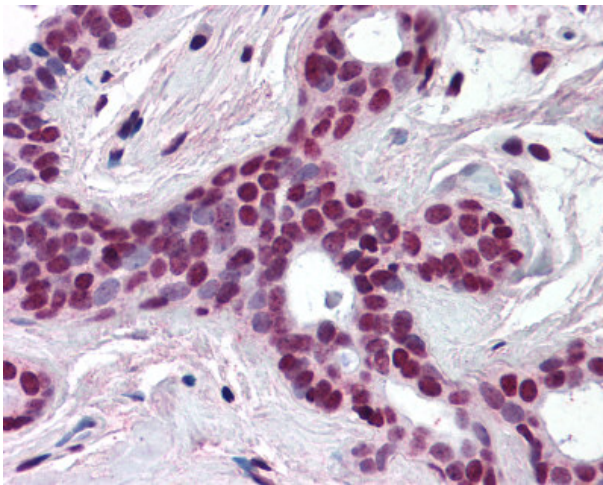
[View online »](#)

Background:

Cullins assemble a potentially large number of ubiquitin ligases by binding to the RING protein ROC1 to catalyse polyubiquitination, as well as binding to various specificity factors to recruit substrates. Cullin 3 is an essential component of the SCF (SKP1-CUL1-F-box protein) E3 ubiquitin ligase complex, which mediates the ubiquitination of proteins involved in cell cycle progression, signal transduction and transcription. In the SCF complex, cul3 serves as a rigid scaffold that organizes the SKP1-F-box protein and RBX1 subunits. Cul3 may also contribute to catalysis through positioning of the substrate and the ubiquitin-conjugating enzyme. Unlike Cul1 and Cul2, Cul3 seems not to be a part of the SCF complex consisting of CUL1, RBX1, SKP1 and SKP2. Cul3 also interacts with RNF7 and is part of a complex with TIP120A/CAND1, Cyclin E and RBX1.

Synonyms:

CUL-3, CUL3, KIAA0617

Product images:

Breast: Formalin-Fixed Paraffin-Embedded (FFPE)