

Product datasheet for **AP07570PU-N**

TORC1 (CRTC1) Rabbit Polyclonal Antibody

Product data:

Product Type:	Primary Antibodies
Applications:	ELISA, IHC, WB
Recommended Dilution:	ELISA: 1/10000 - 1/40000. Immunohistochemistry on Paraffin Sections: 1/500. Western Blot: 1/500 - 1/2000.
Reactivity:	Bovine, Human, Mouse, Rat, Zebrafish
Host:	Rabbit
Clonality:	Polyclonal
Immunogen:	Synthetic peptide from Human CRTC1 / MECT1.
Specificity:	This antibody recognizes amino acids 19-34 of Human MECT1 protein.
Formulation:	0.02 M Potassium Phosphate, 0.15 M Sodium Chloride, pH 7.2 with 0.01% (w/v) Sodium Azide as preservative State: Aff - Purified State: Liquid purified Ig fraction
Concentration:	lot specific
Purification:	Immunoaffinity Chromatography
Conjugation:	Unconjugated
Storage:	Store the antibody undiluted at 2-8°C for one month or (in aliquots) at -20°C for longer. Avoid repeated freezing and thawing.
Stability:	Shelf life: one year from despatch.
Gene Name:	CREB regulated transcription coactivator 1
Database Link:	Entrez Gene 23373 Human Q6UUV9



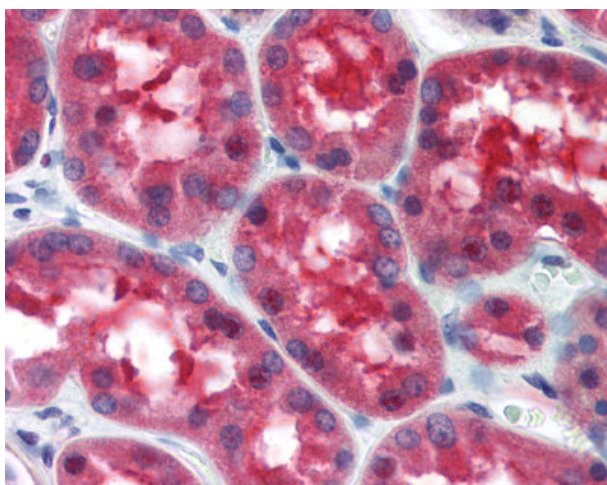
[View online »](#)

Background:

MECT1 (also known as MucoEpidermoid Carcinoma Translocated 1, Transducer of regulated cAMP response element-binding protein 1, TORC1, and Transducer of CREB protein 1) is a nuclear protein that functions as a transcriptional coactivator for CREB1, which activates transcription through both consensus and variant cAMP response element (CRE) sites. MECT1 does not appear to modulate CREB1 DNA-binding activity but enhances the interaction of CREB1 with TAF4/TAFII-130. MECT1 translocates with MAML2 (MasterMind-Like Protein 2) to yield a fusion oncogene: t(11;19) (q21;p13). This translocation occurs in mucoepidermoid carcinomas, benign Warthin tumors and clear cell hidradenomas. The novel fusion product that results disrupts the Notch signaling pathway. The fusion protein consists of the N-terminus of MECT1 joined to the C-terminus of MAML2. The reciprocal fusion protein consisting of the N-terminus of MAML2 joined to the C-terminus of MECT1 has been detected in a small number of mucoepidermoid carcinomas. Multiple isoforms have been reported for the MECT1 protein.

Synonyms:

KIAA0616, TORC1, WAMTP1

Product images:

CRTC1 antibody staining of Formalin-Fixed Paraffin-Embedded Human Kidney at 1/500 followed by biotinylated goat anti-rabbit IgG secondary antibody, alkaline phosphatase-streptavidin and chromogen.