

## Product datasheet for **AP07563SU-N**

### Cyclin A1 (CCNA1) Rabbit Polyclonal Antibody

#### Product data:

Product Type:	Primary Antibodies
Applications:	ELISA, IF, IHC, IP, WB
Recommended Dilution:	<b>ELISA.</b> <b>Immunofluorescence.</b> <b>Immunohistochemistry on Paraffin Sections:</b> 1/500. <b>Immunoprecipitation.</b> <b>Western Blot.</b>
Reactivity:	Human, Mouse, Rat
Host:	Rabbit
Clonality:	Polyclonal
Specificity:	This antibody reacts to full length synthetic polypeptide corresponding to the human gene sequence.
Formulation:	State: Liquid purified Ig containing 0.01% sodium azide
Concentration:	lot specific
Purification:	Delipidation and defibrination
Conjugation:	Unconjugated
Storage:	Store the antibody at -20°C. Avoid repeated freezing and thawing.
Stability:	Shelf life: one year from despatch.
Gene Name:	cyclin A1
Database Link:	<a href="#">Entrez Gene 8900 Human</a> <a href="#">P78396</a>



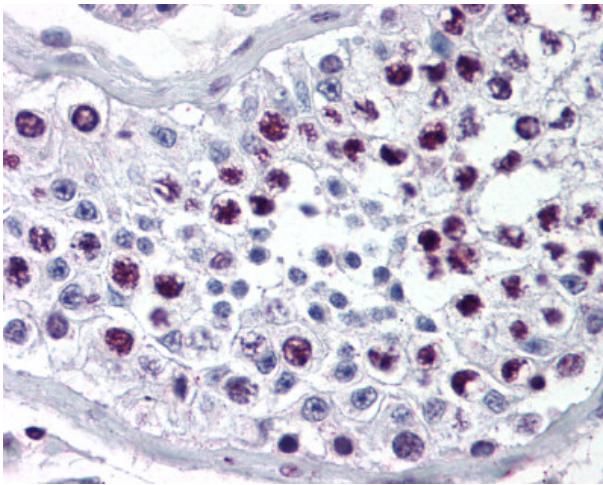
[View online »](#)

**Background:**

The protein encoded by this gene belongs to the highly conserved cyclin family, whose members are characterized by a dramatic periodicity in protein abundance through the cell cycle. Cyclins function as regulators of CDK kinases. Different cyclins exhibit distinct expression and degradation patterns which contribute to the temporal coordination of each mitotic event. The cyclin encoded by this gene was shown to be expressed in testis and brain, as well as in several leukemic cell lines, and is thought to primarily function in the control of the germline meiotic cell cycle. This cyclin binds both CDK2 and CDC2 kinases, which give two distinct kinase activities, one appearing in S phase, the other in G2, and thus regulate separate functions in cell cycle. This cyclin was found to bind to important cell cycle regulators, such as Rb family proteins, transcription factor E2F-1, and the p21 family proteins. Multiple transcript variants encoding different isoforms have been found for this gene.

**Synonyms:**

Cyclin-A1, CCNA1

**Product images:**


Testis: Formalin-Fixed Paraffin-Embedded (FFPE)