

Product datasheet for **AP07562SU-N**

TIP120B (CAND2) Rabbit Polyclonal Antibody

Product data:

Product Type:	Primary Antibodies
Applications:	ELISA, IHC, IP, WB
Recommended Dilution:	ELISA: 1/2000 - 1/10000. Immunohistochemistry on Paraffin Sections: 1/500. Immunoprecipitation. Western Blot: 1/500 - 1/1000.
Reactivity:	Human, Mouse, Rat
Host:	Rabbit
Clonality:	Polyclonal
Immunogen:	Synthetic peptide
Specificity:	This antibody reacts to amino acids 1130-1143 of CAND2/TIP120B (C-terminal) coupled to KLH.
Formulation:	State: Liquid purified Ig containing 0.01% (w/v) sodium azide
Concentration:	lot specific
Purification:	Delipidation and defibrination
Conjugation:	Unconjugated
Storage:	Store the antibody at -20°C. Avoid repeated freezing and thawing.
Stability:	Shelf life: one year from despatch.
Gene Name:	cullin associated and neddylation dissociated 2 (putative)
Database Link:	Entrez Gene 23066 Human O75155



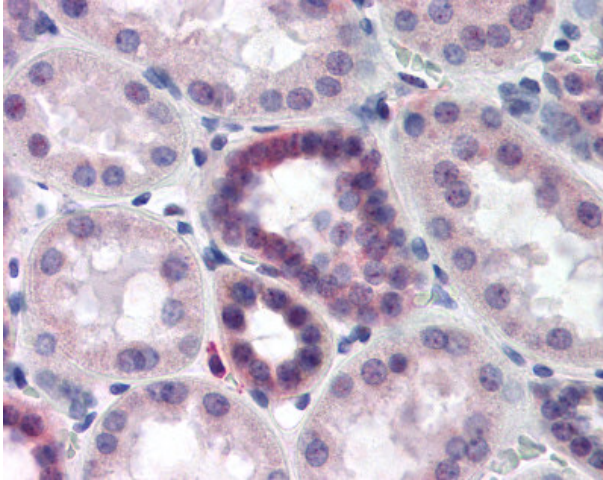
[View online »](#)

Background:

CAND2 is also known as TIP120B, and TATA-binding protein-interacting protein 120B. While both CAND1 (TIP120A) and CAND2 (TIP120B) are TATA-binding proteins and form complexes with various nuclear proteins involved in the control of eukaryotic gene transcription, CAND2 (TIP120B) is expressed specifically in muscle and heart tissue. This is contrary to the ubiquitous expression of CAND1 (TIP120A). TIP120 homologs exist in various higher eukaryotes including *D. melanogaster*, *C. elegans*, and *A. thaliana*. TIP120B is 60% identical in amino acid sequence to TIP120A.

Synonyms:

p120 CAND2, KIAA0667, TIP120B

Product images:


Kidney: Formalin-Fixed Paraffin-Embedded (FFPE)