

Product datasheet for **AP07559PU-N**

AP3D1 (686-698) Goat Polyclonal Antibody

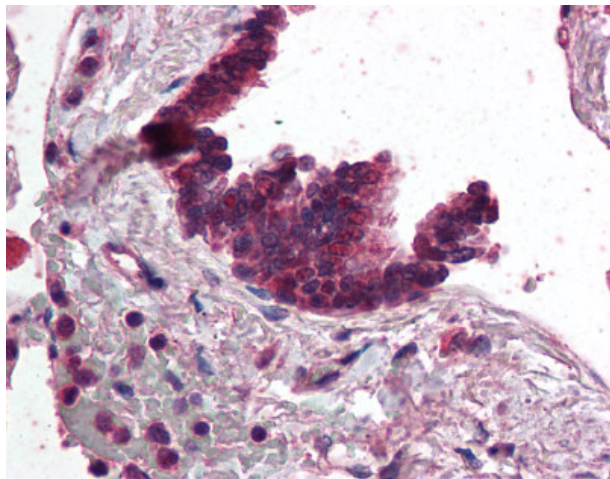
Product data:

Product Type:	Primary Antibodies
Applications:	ELISA, IHC, WB
Recommended Dilution:	ELISA: 1/5000 - 1/20000. Immunohistochemistry on Paraffin Sections: 2.5 µg/ml. Western Blot: 1/500 - 1/2000.
Reactivity:	Chicken, Human, Canine, Mouse, Rat
Host:	Goat
Clonality:	Polyclonal
Immunogen:	Synthetic peptide from aa686-698 of Human AP3D1 / AP3.
Specificity:	This antibody reacts with aa 686-698 of AP3D1.
Formulation:	0.02M Potassium Phosphate, 0.15M Sodium Chloride, pH 7.2 State: Aff - Purified State: Liquid purified Ig fraction Preservative: 0.01% (w/v) Sodium Azide
Concentration:	lot specific
Purification:	Immunoaffinity Chromatography
Conjugation:	Unconjugated
Storage:	Store the antibody undiluted at 2-8°C for one month or (in aliquots) at -20°C for longer. Avoid repeated freezing and thawing.
Stability:	Shelf life: one year from despatch.
Gene Name:	adaptor related protein complex 3 delta 1 subunit
Database Link:	Entrez Gene 8943 Human Q14617
Background:	AP3D1 (also known as Delta-adaptin 3, AP-3 complex delta subunit and Delta-adaptin) is a subunit of the AP3 adaptor-like complex, which is not associated with clathrin. The AP3D1 subunit is implicated in intracellular biogenesis and trafficking of pigment granules and possibly platelet dense granules and neurotransmitter vesicles.
Synonyms:	PRO0039, delta Adaptin



[View online »](#)

Product images:



AP3D1 antibody staining of Formalin-Fixed Paraffin-Embedded Human Lung, Respiratory Epithelium at 2.5 ug/ml