

## Product datasheet for **AP07558PU-N**

### gamma Adaptin (AP1G1) (646-659) Goat Polyclonal Antibody

#### Product data:

Product Type:	Primary Antibodies
Applications:	ELISA, IF, IHC, WB
Recommended Dilution:	<b>ELISA:</b> 1/2000 - 1/8000. <b>Immunofluorescence.</b> <b>Immunohistochemistry on Paraffin Sections:</b> 2.5 µg/ml. <b>Western Blot:</b> 1/500 - 1/2000.
Reactivity:	Human, Canine, Chicken, Mouse, Rat
Host:	Goat
Clonality:	Polyclonal
Immunogen:	Synthetic peptide from human AP1G1 / Gamma Adaptin. <b>Epitope:</b> aa646-659
Specificity:	This antibody recognizes the aa 646-659 of Human AP1G1.
Formulation:	0.02M Potassium Phosphate, 0.15M Sodium Chloride, pH 7.2 with 0.01% (w/v) Sodium Azide as preservative State: Aff - Purified State: Liquid purified Ig fraction
Concentration:	lot specific
Purification:	Immunoaffinity Chromatography
Conjugation:	Unconjugated
Storage:	Store undiluted at 2-8°C for one month or (in aliquots) at -20°C for longer. Avoid repeated freezing and thawing.
Stability:	Shelf life: one year from despatch.
Gene Name:	adaptor related protein complex 1 gamma 1 subunit
Database Link:	<a href="#">Entrez Gene 164 Human</a> <a href="#">O43747</a>



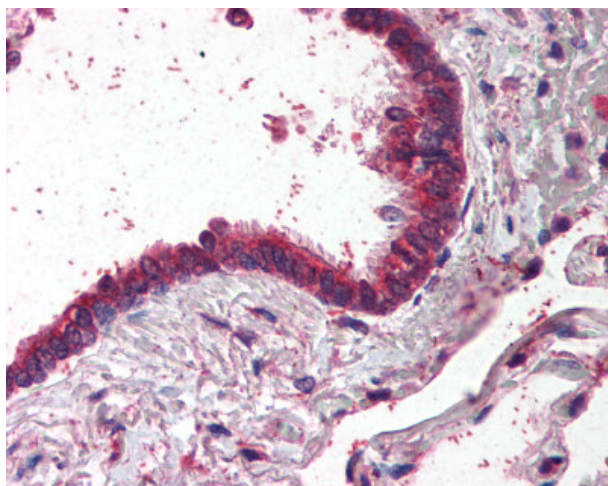
[View online »](#)

**Background:**

AP1G1 (also known as gamma 1 subunit of adaptor -related protein complex 1, Gamma-adaptin, Adaptor protein complex AP-1 gamma-1 subunit, Golgi adaptor HA1/AP1 adaptin gamma-1 subunit and Clathrin assembly protein complex 1 gamma-1 large chain) is a subunit of clathrin-associated adaptor protein complex 1 that plays a role in protein sorting in the late-Golgi/trans-Golgi network (TGN) and/or endosomes. The AP complexes mediate both the recruitment of clathrin to membranes and the recognition of sorting signals within the cytosolic tails of transmembrane cargo molecules. The adaptin family of proteins is composed of four classes of molecules named alpha, beta-, beta prime- and gamma-adaptins. Adaptins, together with medium and small subunits, form a heterotetrameric complex called an adaptor, whose role is to promote the formation of clathrin-coated pits and vesicles. AP1G1 is localized to the coat surrounding the cytoplasmic face of coated vesicles located at the Golgi complex and is widely expressed.

**Synonyms:**

ADTG, CLAPG1, gamma 1 Adaptin, gamma Adaptin

**Product images:**

AP1G1 antibody staining of Formalin-Fixed Paraffin-Embedded Human Lung, Respiratory Epithelium at 2.5 ug/ml followed by biotinylated anti-Goat IgG secondary antibody, alkaline phosphatase-streptavidin and chromogen.