

## Product datasheet for **AP07549PU-N**

### **BACH1 (Isoform 1) (92-104) Rabbit Polyclonal Antibody**

#### **Product data:**

Product Type:	Primary Antibodies
Applications:	ELISA, IF, IHC, WB
Recommended Dilution:	<b>ELISA:</b> 1/10000 - 1/44000. <b>Immunofluorescence.</b> <b>Immunohistochemistry on Paraffin Sections:</b> 5 µg/ml. <b>Western Blot:</b> 1/500 - 1/2000.
Reactivity:	Human, Monkey, Mouse, Rat
Host:	Rabbit
Clonality:	Polyclonal
Immunogen:	Recombinant human BACH1 , aa 92-104
Specificity:	This antibody reacts to the amino acids 92-104 of isoform 1 of BACH1 protein.
Formulation:	0.02 M Potassium Phosphate, 0.15 M Sodium Chloride, pH 7.2 with 0.01% (w/v) Sodium Azide State: Aff - Purified State: Liquid purified Ig
Concentration:	lot specific
Purification:	Immunoaffinity Chromatography
Conjugation:	Unconjugated
Storage:	Store undiluted at 2-8°C for one month or (in aliquots) at -20°C for longer. Avoid repeated freezing and thawing.
Stability:	Shelf life: one year from despatch.
Gene Name:	BTB domain and CNC homolog 1
Database Link:	<a href="#">Entrez Gene 571 Human</a> <a href="#">O14867</a>



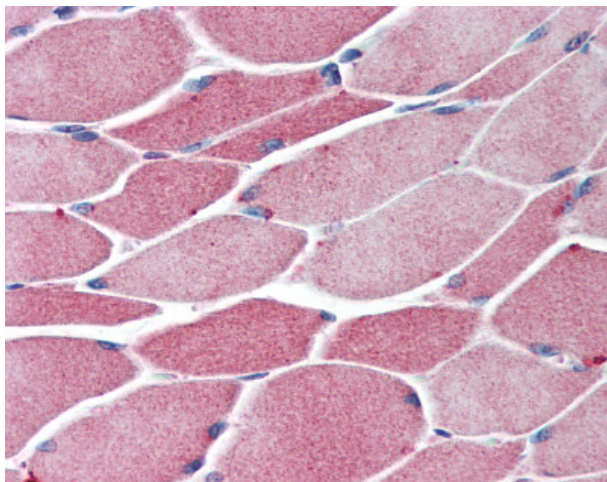
[View online »](#)

**Background:**

BACH1 (also known as BRCA1 interacting protein C-terminal helicase 1, BRCA1-interacting protein 1 and BRCA1-associated C-terminal helicase 1) is a member of the RecQ DEAH helicase family and interacts with the BRCT repeats of breast cancer, type 1 (BRCA1). The bound complex is important in the normal double-strand break repair function of breast cancer, type 1 (BRCA1). The BACH1 gene may be a target of germline cancer-inducing mutations. BACH1 is localized within the nucleus and functions as a DNA-dependent ATPase and 5' to 3' DNA helicase. Two isoforms have been identified for this protein.

**Synonyms:**

HA2303

**Product images:**

Skeletal muscle: Formalin-Fixed Paraffin-Embedded (FFPE)