

Product datasheet for **AP07539PU-N**

Haptoglobin (HP) Rabbit Polyclonal Antibody

Product data:

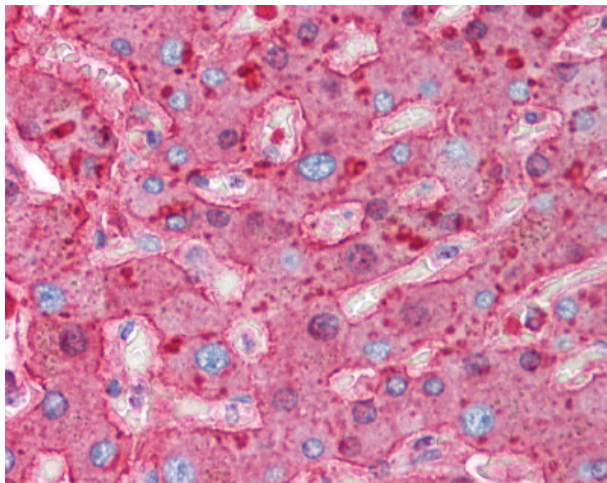
Product Type:	Primary Antibodies
Applications:	ELISA, IF, IHC, WB
Recommended Dilution:	ELISA. Immunofluorescence. Immunohistochemistry on Paraffin Sections: 0.31 µg/ml. Western Blot: 1/2000 - 1/10000.
Reactivity:	Human
Host:	Rabbit
Clonality:	Polyclonal
Immunogen:	HP / Haptoglobin antibody was raised against purified full length human haptoglobin
Specificity:	This antibody reacts with Haptoglobin.
Formulation:	0.02 M Potassium Phosphate, 0.15 M Sodium Chloride, pH 7.2 with 0.01% (w/v) Sodium Azide as preservative State: Aff - Purified State: Liquid purified Ig fraction
Concentration:	lot specific
Purification:	Immunoaffinity Chromatography
Conjugation:	Unconjugated
Storage:	Store vial at -20 C prior to opening. Store the antibody diluted at 2-8°C for one month or (in aliquots) at -20°C for longer. Avoid repeated freezing and thawing.
Stability:	Shelf life: one year from despatch.
Gene Name:	haptoglobin
Database Link:	Entrez Gene 3240 Human P00738
Background:	Haptoglobin combines with free plasma hemoglobin, preventing loss of iron through the kidneys and protecting the kidneys from damage by hemoglobin, while making the hemoglobin accessible to degradative enzymes.



[View online »](#)

Synonyms: BP; haptoglobin; HP2-ALPHA-2; HPA1S; MGC111141

Product images:



Liver: Formalin-Fixed Paraffin-Embedded (FFPE)