

Product datasheet for **AP07538PU-N**

Orexin (HCRT) (2-14) Sheep Polyclonal Antibody

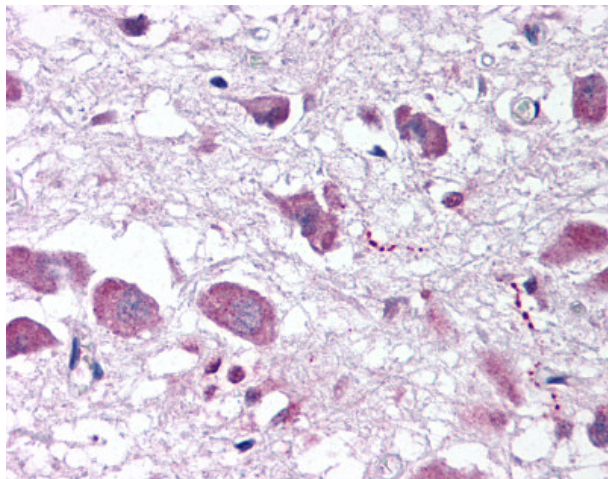
Product data:

Product Type:	Primary Antibodies
Applications:	ELISA, IHC
Recommended Dilution:	ELISA. Immunohistochemistry on Frozen Sections. Immunohistochemistry on Paraffin Sections: 10 µg/ml.
Reactivity:	Human, Bovine, Canine, Equine, Porcine, Rabbit, Monkey, Rat
Host:	Sheep
Clonality:	Polyclonal
Immunogen:	Synthetic peptide of HCRT / Orexin corresponding to amino acids 2-14 of human orexin A conjugated to KLH
Specificity:	Specific for orexin A
Formulation:	PBS, pH 7.2 State: Ig Fraction State: Liquid purified Ig fraction Preservative: 0.09% Sodium Azide
Concentration:	lot specific
Conjugation:	Unconjugated
Storage:	Store undiluted at 2-8°C for one month or (in aliquots) at -20°C for longer. Avoid repeated freezing and thawing.
Stability:	Shelf life: one year from despatch.
Gene Name:	hypocretin (orexin) neuropeptide precursor
Database Link:	Entrez Gene 3060 Human O43612
Background:	Orexin, or hypocretin (HCRT), is a hypothalamic neuropeptide precursor protein that gives rise to two mature neuropeptides, orexin A and orexin B, by proteolytic processing. Orexin A and orexin B, which bind to orphan G-protein coupled receptors HCRTR1 and HCRTR2, are mediators in the central feedback mechanism that regulates feeding behavior.
Synonyms:	HCRT, OX, PPORX, PPOX, Hypocretin



[View online »](#)

Product images:



Formalin-Fixed Paraffin-Embedded Human Brain hypothalamus stained with Orexin Antibody at 10 ug/ml