

Product datasheet for **AP07532PU-N**

GOT2 Sheep Polyclonal Antibody

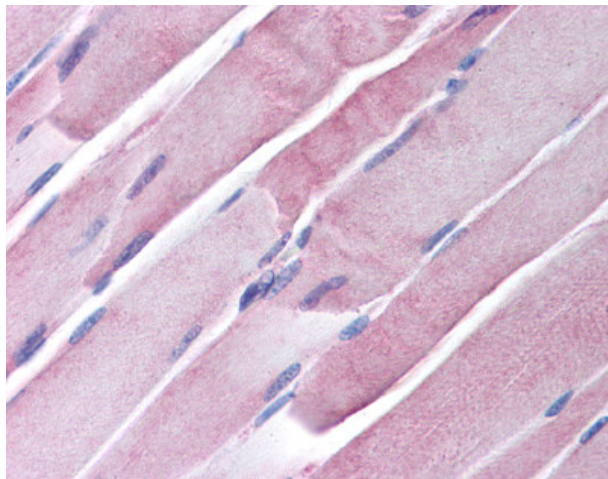
Product data:

Product Type:	Primary Antibodies
Applications:	IF, IHC, IP, WB
Recommended Dilution:	Immunofluorescence. Immunohistochemistry on Paraffin Sections: 20 µg/ml. Immunoprecipitation. Western Blot.
Reactivity:	Human, Porcine
Host:	Sheep
Clonality:	Polyclonal
Immunogen:	Aspartate transaminase purified from pig heart
Specificity:	This antibody Recognizes Glutamic-Oxaloacetic Transaminase 2 (GOT2).
Formulation:	0.015 M Potassium Phosphate Buffer, 0.15 M Sodium Chloride, pH 7.2 containing 0.09% Sodium Azide as preservative State: Purified State: Liquid purified Ig fraction
Concentration:	lot specific
Conjugation:	Unconjugated
Storage:	Store the antibody undiluted (in aliquots) at -20°C. Avoid repeated freezing and thawing.
Stability:	Shelf life: one year from despatch.
Database Link:	P00506
Background:	Biosynthesis of L-glutamate from L-aspartate or L-cysteine. Important regulator of levels of glutamate, the major excitatory neurotransmitter of the vertebrate central nervous system. Acts as a scavenger of glutamate in brain neuroprotection. The aspartate aminotransferase activity is involved in hepatic glucose synthesis during development and in adipocyte glyceroneogenesis. Using L-cysteine as substrate, regulates levels of mercaptopyruvate, an important source of hydrogen sulfide.
Synonyms:	Aspartate aminotransferase, mitochondrial, mAspAT, Transaminase A, FABP-1, FABPpm



[View online »](#)

Product images:



Skeletal Muscle: Formalin-Fixed Paraffin-Embedded (FFPE)