

Product datasheet for **AP07527PU-N**

Cbl c (CBLC) Rabbit Polyclonal Antibody

Product data:

Product Type:	Primary Antibodies
Applications:	ELISA, IF, IHC, IP, WB
Recommended Dilution:	ELISA: 1/10000 - 1/50000. Immunofluorescence. Immunohistochemistry on Paraffin Sections: 5 µg/ml. Immunoprecipitation. Western Blot: 1/500 - 1/3000.
Reactivity:	Human
Host:	Rabbit
Clonality:	Polyclonal
Immunogen:	Synthetic peptide - KLH conjugated corresponding to amino acids 444-458 of Human Cbl-c.
Specificity:	This antibody recognizes RNF57/CBLC.
Formulation:	0.02 M Potassium Phosphate, 0.15 M Sodium Chloride, pH 7.2 with 0.01% (w/v) Sodium Azide. State: Aff - Purified State: Liquid purified Ig fraction.
Concentration:	lot specific
Purification:	Immunoaffinity Chromatography.
Conjugation:	Unconjugated
Storage:	Store the antibody undiluted at 2-8°C for one month or (in aliquots) at -20°C for longer. Avoid repeated freezing and thawing.
Stability:	Shelf life: one year from despatch.
Gene Name:	Cbl proto-oncogene C
Database Link:	Entrez Gene 23624 Human Q9ULV8



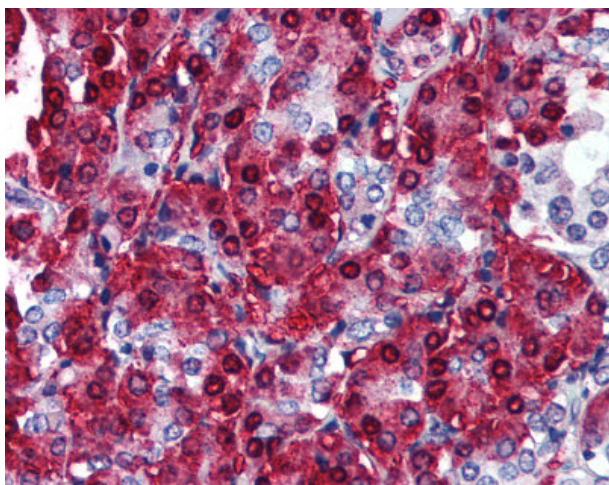
[View online »](#)

Background:

Cbl-c is also known as signal transduction protein CBL-C, SH3-binding protein CBL-C, CBL-3, and RING finger protein 57. Cbl proteins are a family of ubiquitin protein ligases (E3s) that negatively regulate signaling by targeting activated tyrosine kinases for degradation. Cbl-c (a.k.a. Cbl-3) is the most recently cloned member of the Cbl proteins and is expressed only in epithelial cells (the other Cbl proteins are ubiquitously expressed). Cbl-c, like the other mammalian Cbl proteins, can ubiquitinate the activated EGFR and target it for degradation. Cbl-c knock out mice show no obvious phenotype. Thus, the physiological role of Cbl-c is not known.

Synonyms:

CBL3, CBL-C, CBL-3, RING finger protein 57

Product images:

Pancreas: Formalin-Fixed Paraffin-Embedded (FFPE)