

Product datasheet for **AP07505PU-N**

BRSK1 (C-term) Rabbit Polyclonal Antibody

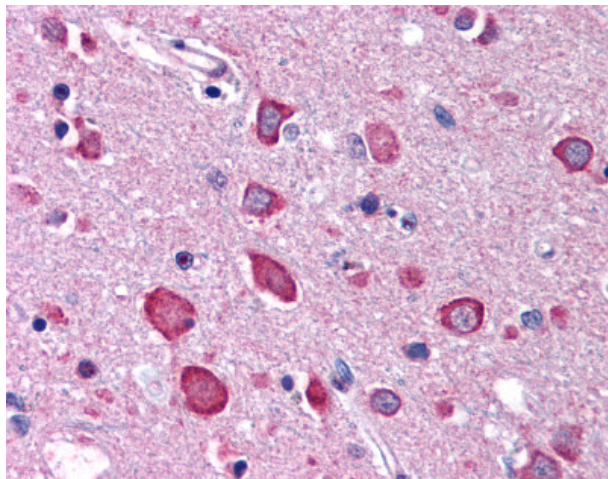
Product data:

Product Type:	Primary Antibodies
Applications:	IF, IHC, WB
Recommended Dilution:	Immunofluorescence: 20 µg/ml. Immunohistochemistry on Paraffin Sections: 5 µg/ml. Western Blot: 0.5 - 1 µg/ml.
Reactivity:	Human, Mouse, Rat
Host:	Rabbit
Isotype:	IgG
Clonality:	Polyclonal
Immunogen:	Synthetic peptide
Specificity:	This antibody reacts to a 28 amino acid peptide from near the carboxy terminus of BRSK1.
Formulation:	Phosphate buffered saline, containing 0.02% sodium azide State: Purified State: Liquid purified Ig
Concentration:	lot specific
Conjugation:	Unconjugated
Storage:	Store the antibody undiluted at 2-8°C for one month or (in aliquots) at -20°C for longer. Avoid repeated freezing and thawing.
Stability:	Shelf life: one year from despatch.
Gene Name:	BR serine/threonine kinase 1
Database Link:	Entrez Gene 84446 Human Q8TDC3
Background:	BRSK1 is thought to be involved in the regulation of G2/M arrest and to function as a checkpoint kinase following DNA damage induced by UV or methyl methane sulfonate. BRSK1 phosphorylates WEE1 and CDC25B in vitro and CDC25C in vitro and in vivo.
Synonyms:	KIAA1811, SAD1, SAD-B



[View online »](#)

Product images:



Brain, cortex: Formalin-Fixed Paraffin-Embedded (FFPE)