

## Product datasheet for **AP07494PU-N**

### DCBLD2 Rabbit Polyclonal Antibody

#### Product data:

Product Type:	Primary Antibodies
Applications:	ELISA, IHC, WB
Recommended Dilution:	<b>ELISA.</b> <b>Immunohistochemistry on Paraffin Sections:</b> 2.5 µg/ml. <b>Western Blot:</b> 1/500 - 1/1000.
Reactivity:	Human, Mouse, Rat, Hamster
Host:	Rabbit
Isotype:	IgG
Clonality:	Polyclonal
Immunogen:	Synthetic peptide
Specificity:	This antibody residues 399-416 [QDKIFQGNKDYHKDVRNN] of the ESDN protein.
Formulation:	PBS containing 0.02% sodium azide State: Aff - Purified State: Liquid purified Ig
Concentration:	lot specific
Purification:	Immunoaffinity Chromatography
Conjugation:	Unconjugated
Storage:	Store the antibody undiluted at 2-8°C for one month or (in aliquots) at -20°C for longer. Avoid repeated freezing and thawing.
Stability:	Shelf life: one year from despatch.
Gene Name:	discoidin, CUB and LCCL domain containing 2
Database Link:	<a href="#">Entrez Gene 131566 Human Q96PD2</a>



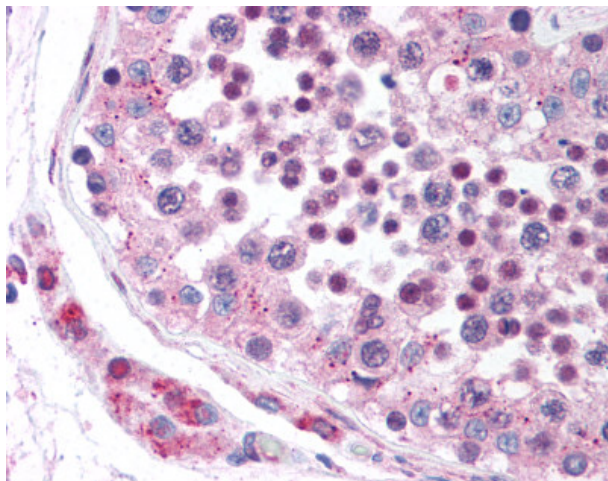
[View online »](#)

**Background:**

DCBLD2, otherwise known as ESDN (endothelial and smooth muscle cell-derived neuropilin-like molecule) is a novel type-I transmembrane protein with the longest cleavable secretory signal sequence among eukaryotes. It is expressed in various tissues; particularly highly expressed in cultured vascular smooth muscle cells. DCBLD2 is considered to play a role in regulation of vascular cell growth and may have a wide variety of functions in other tissues including the nervous system, like neuropilins.

**Synonyms:**

CLCP1, ESDN

**Product images:**

Testis: Formalin-Fixed Paraffin-Embedded (FFPE)