

## Product datasheet for **AP07454PU-N**

### **SLC2A10 (367-385) Rabbit Polyclonal Antibody**

#### **Product data:**

Product Type:	Primary Antibodies
Applications:	ELISA, IHC, WB
Recommended Dilution:	<b>ELISA.</b> <b>Immunohistochemistry on Paraffin Sections:</b> 5 µg/ml. <b>Western Blot:</b> 1/500 - 1/1000.
Reactivity:	Human, Mouse, Rat
Host:	Rabbit
Isotype:	IgG
Clonality:	Polyclonal
Immunogen:	Synthetic peptide corresponding to amino acid residues 367-385 of Human, Mouse and Rat GLUT10
Specificity:	This antibody recognizes Glucose Transporter type 10 (GLUT10) at aa 367-385.
Formulation:	PBS State: Aff - Purified State: Liquid purified Ig fraction Preservative: 0.02% Sodium Azide
Concentration:	lot specific
Purification:	Immunoaffinity Chromatography
Conjugation:	Unconjugated
Storage:	Store the antibody undiluted at 2-8°C for one month or (in aliquots) at -20°C for longer. Avoid repeated freezing and thawing.
Stability:	Shelf life: one year from despatch.
Gene Name:	solute carrier family 2 member 10
Database Link:	<a href="#">Entrez Gene 81031 Human O95528</a>



[View online »](#)

**Background:**

Non-insulin-dependent diabetes mellitus (NIDDM) is a multifactorial disease with both environmental and genetics causes. Genome-wide screening procedures have identified several susceptibility loci for NIDDM within the human genome. A putative sugar transporter has been localized to human chromosome 20q12- q13.1, one of the genomic loci associated with NIDDM. Because of the strong resemblance of this novel protein to members of the mammalian facilitative glucose transporter family (GLUT), the protein is known as GLUT10 (HGMW-approved gene symbol SLC2A10). Data suggests that GLUT10 is an excellent candidate for a susceptibility gene involved in NIDDM.

**Synonyms:**

GLUT-10, Glucose transporter 10, Glucose transporter type 10

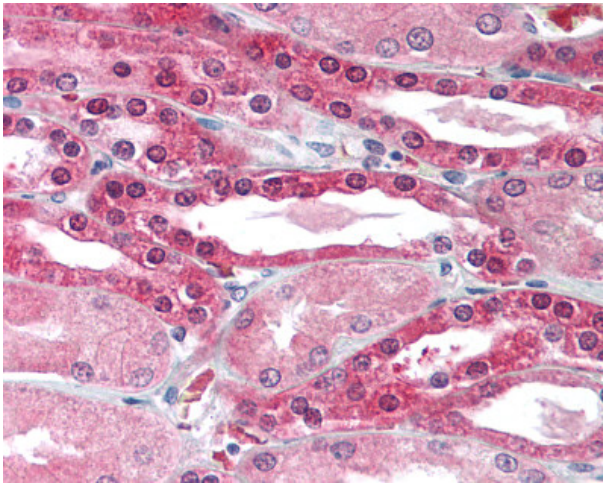
**Product images:**

Figure 1. GLUT10 antibody staining of Formalin-Fixed Paraffin-Embedded Human Kidney.